



Governors' Climate & Forests Task Force (GCF)

Mariana Pavan

*GCF Country Coordinator for Brazil
Climate Change and Environmental
Services Program Coordinator (Idesam)*

mn.pavan@idesam.org.br

Avi Mahaningtyas

*GCF Country Coordinator for Indonesia
Economic and Environmental Cluster
Kemitraan, Partnership for Governance
Reform*

avi.mahaningtyas@kemitraan.or.id



BRAZIL Acre, Amapá, Amazonas, Mato Grosso, Pará | **PERU** Madre de Dios
INDONESIA Aceh, Central Kalimantan, East Kalimantan, Papua, West Kalimantan
MEXICO Campeche, Chiapas | **NIGERIA** Cross River State | **USA** California, Illinois



About GCF

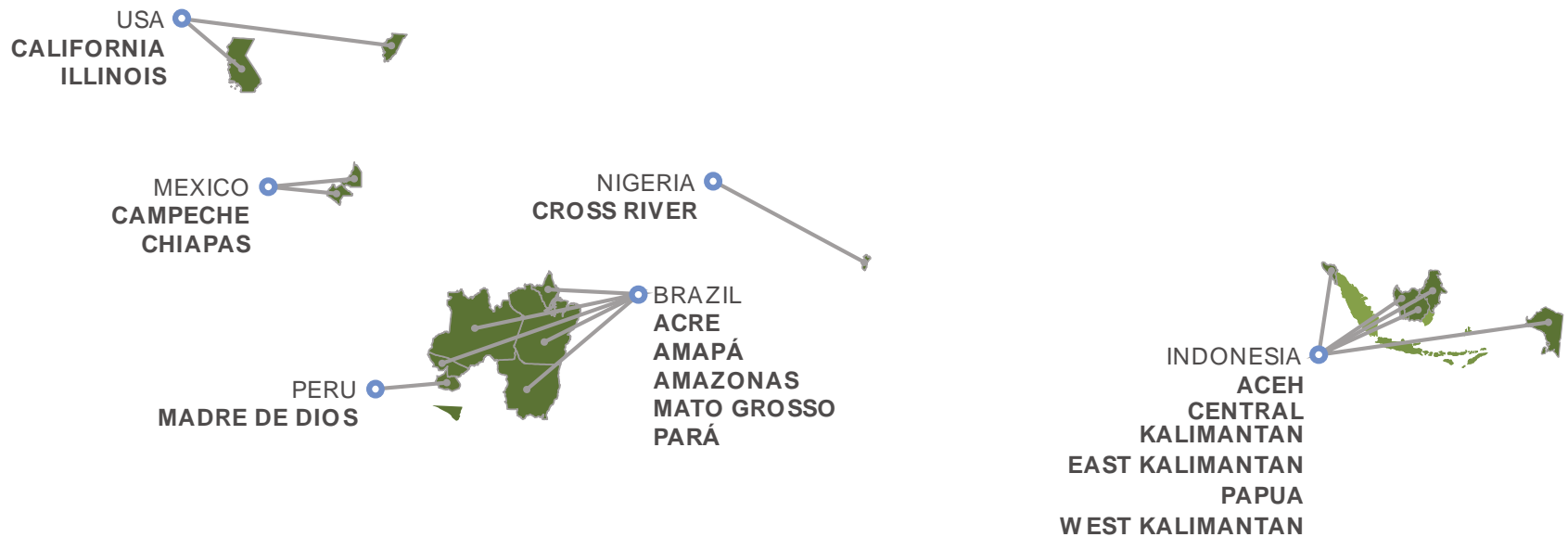
- A unique subnational collaboration between 16 jurisdictions from Brazil, Indonesia, Mexico, Nigeria, Peru and the U.S. working to protect tropical forests, design and implement REDD+ programs and promote realistic pathways to forest-maintaining rural development.



BRAZIL Acre, Amapá, Amazonas, Mato Grosso, Pará | **PERU** Madre de Dios
INDONESIA Aceh, Central Kalimantan, East Kalimantan, Papua, West Kalimantan
MEXICO Campeche, Chiapas | **NIGERIA** Cross River State | **USA** California, Illinois



GCF Subnational Jurisdictions Encompass More Than 20% of the World's Tropical Forests



GOVERNORS

GCF CHAIR
CHIAPAS 2012
ACEH 2011
AMAZONAS | PARÁ 2010
CALIFORNIA 2009

GCF FUND

MEMBER STATES AND PROVINCES

BRAZIL
Acre
Amapá
Amazonas
Mato Grosso
Pará

INDONESIA
Aceh
Central
Kalimantan
East Kalimantan
Papua
West Kalimantan

MEXICO
Campeche
Chiapas
NIGERIA
Cross River State

PERU
Madre De Dios
USA
California
Illinois

OBSERVER STATES

**GCF COORDINATOR
IN INDONESIA**

GCF SECRETARIAT
Staff and consultants

**GCF COORDINATOR
IN BRAZIL**

**PARTNERS
& DONORS**

TECHNICAL/ADVISORY BODIES
3 Working Groups
4 Task Groups

STAKEHOLDERS



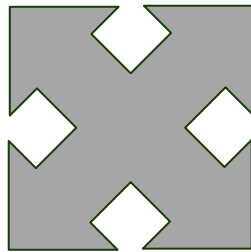
GCF Members: Committed to Shared Advancement

- GCF members share experiences, best-practices and build each others capacity via:
 - 2 Technical and capacity building workshops per country, per year; and
 - Annual meeting for all members, leading experts and all interested stakeholders.



TASK 1
**SUBNATIONAL
FRAMEWORKS FOR
REDD+**

TASK 2
**REDD+ FINANCING
GCF FUND**



TASK 3
**KNOWLEDGE
DATABASE**

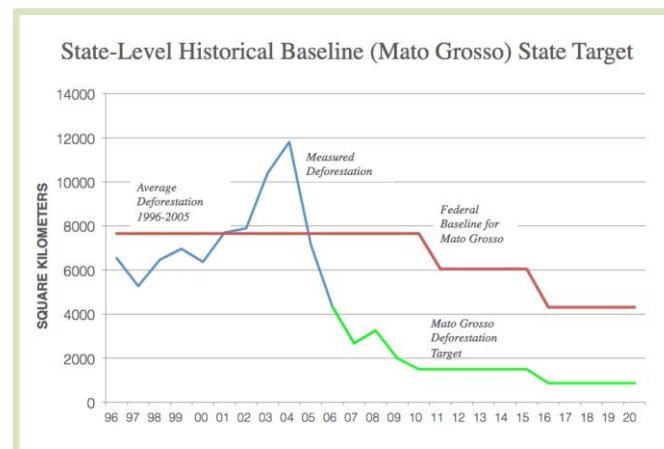
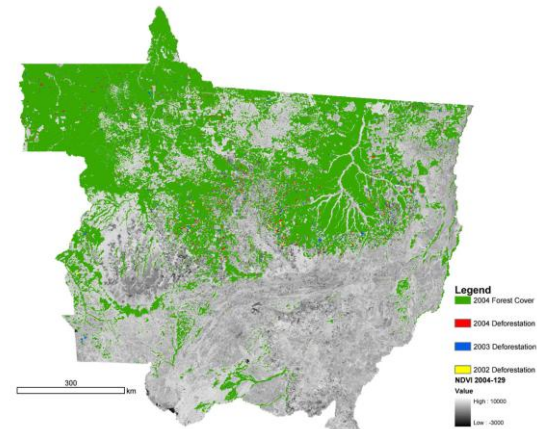
TASK 4
**STAKEHOLDER INPUT
AND TRANSPARENCY**



Task 1 :: Subnational REDD+ Frameworks

Generating common platforms representing “state-of-the-art” thinking on key elements and design options for subnational REDD+ frameworks

- MRV
- Reference levels
- Safeguards
- Drivers of deforestation
- Others...





Task 2 :: GCF Fund

COLLECTIVE NEEDS

(all 14 GCF tropical forest states assisted)

- 1) REDD+ program design and capacity based on common GCF Subnational REDD+ Platform developed by GCF members;
- 2) Reference level development;
- 3) Enhanced stakeholder processes; and
- 4) Progress toward achieving IPCC Tier 2 forest carbon assessments.

PROOF-OF-CONCEPT ACTIVITIES

(in Selected GCF States/Provinces)

- 1) Model benefits-sharing arrangements;
- 2) Development of subnational REDD+ registries;
- 3) Technical improvements to measurement and monitoring (clouds and degradation); and
- 4) Leveraging private investment.

* Initial contribution of \$1.5 million from the U.S. Department of State



BRAZIL Acre, Amapá, Amazonas, Mato Grosso, Pará | **PERU** Madre de Dios
INDONESIA Aceh, Central Kalimantan, East Kalimantan, Papua, West Kalimantan
MEXICO Campeche, Chiapas | **NIGERIA** Cross River State | **USA** California, Illinois

Task 4 :: Communications & Stakeholder Involvement

- GCF Stakeholder Involvement Policy
- GCF meetings, task groups, and other activities are open to all stakeholders
- GCF annual Activities Report and Newsletter
- GCF content is translated and made publicly available in timely manner at: www.gcftaskforce.org



BRAZIL Acre, Amapá, Amazonas, Mato Grosso, Pará | **PERU** Madre de Dios
INDONESIA Aceh, Central Kalimantan, East Kalimantan, Papua, West Kalimantan
MEXICO Campeche, Chiapas | **NIGERIA** Cross River State | **USA** California, Illinois





New GCF Activities

- Google Partnership: GCF has received a free license and technical support to Google's innovative Earth Engine and Earth Builder to assist members in spatial planning and forest carbon mapping;
- Carbon Registry for interested members and whenever suitable: GCF is planning a common registry architecture that will allow GCF members to develop custom carbon registries for their jurisdictions;
- Sustainable Supply Chains: GCF is linking sustainable supply chain efforts with jurisdictional REDD+ programs



GCF Member Results

- Building economies that are gradually increasing the value of standing forests through forest-dependent industries;
- Enforce regulations on logging and forests conversion ;
- Developing & adopting comprehensive state-level REDD+ programs;
- Plans for prevention of forests fire and control deforestation



Other Benefits of GCF Membership

- GCF TF members have more knowledge on climate and forests governance, deforestation and REDD+ development through sharing lessons and experiences
- Active Engagement in national policy development in combating deforestation
- Access to database and have informed stakeholders in reduction of GHG emission



Goals for 2012



- Building new REDD+ partnerships with developed country subnational jurisdictions for GCF members to address identified needs of states and provinces; and



- Securing additional funds for the GCF Fund to provide technical assistance for REDD+ capacity building and proof-of-concept activities in tropical forest jurisdictions.



Funders:



Country Coordination:



Secretariat:



BRAZIL Acre, Amapá, Amazonas, Mato Grosso, Pará | **PERU** Madre de Dios
INDONESIA Aceh, Central Kalimantan, East Kalimantan, Papua, West Kalimantan
MEXICO Campeche, Chiapas | **NIGERIA** Cross River State | **USA** California, Illinois



Thank you !

www.gcftaskforce.org

www.idesam.org.br / www.kemitraan.or.id

mn.pavan@idesam.org.br / avi.mahaningtyas@kemitraan.or.id