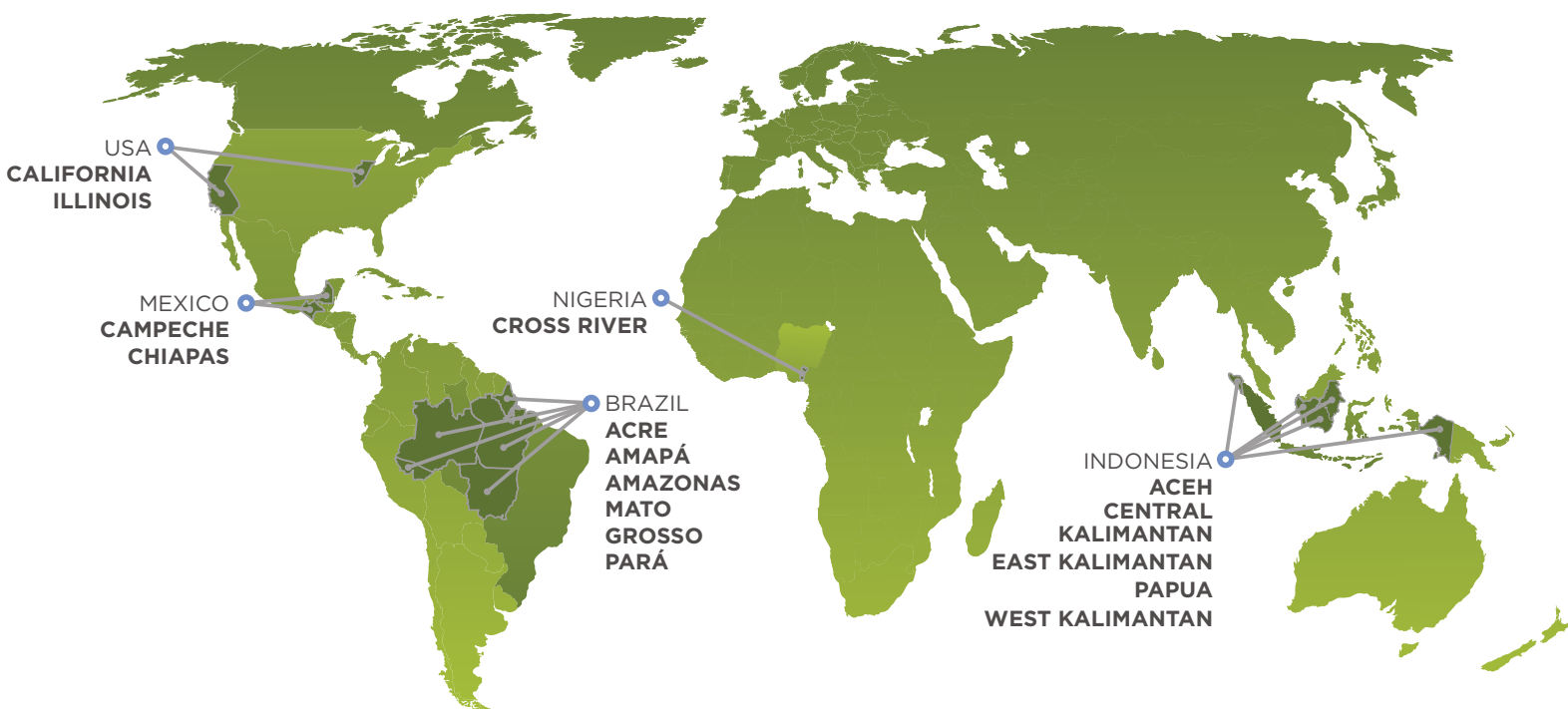




GCF

task force

Governors' Climate and Forests Task Force



STATE OF ACRE
BRAZIL



STATE OF AMAPÁ
BRAZIL



STATE OF AMAZONAS
BRAZIL



STATE OF MATO GROSSO
BRAZIL



STATE OF PARA
BRAZIL



ACEH PROVINCE
INDONESIA



CENT. KALIMANTAN PROV.
INDONESIA



EAST KALIMANTAN PROV.
INDONESIA



PAPUA PROVINCE
INDONESIA



WEST KALIMANTAN PROVINCE
INDONESIA



STATE OF CAMPECHE
MEXICO



STATE OF CHIAPAS
MEXICO



CROSS RIVER STATE
NIGERIA



STATE OF CALIFORNIA
U.S.



STATE OF ILLINOIS
U.S.

THE GCF'S ORIGIN & OBJECTIVES

The Governors' Climate & Forests Task Force (GCF) is a unique subnational collaboration between 15 states and provinces from 5 countries. More than 20% of the world's tropical forests are included within GCF states and provinces, including approximately 75% of Brazil's and more than half of Indonesia's tropical forests. Since 2008, the GCF states and provinces have been developing the principles and regulatory architectures to support sub-national pathways to high-quality REDD+ programs that can access existing and emerging greenhouse gas (GHG) compliance markets and other pay-for-performance schemes.

The GCF grew out of the November 2008 Governors' Global Climate Summit in California, where Governors from the U.S., Brazil and Indonesia signed Memoranda of Understanding (MOUs) to facilitate cooperation on climate policy, financing, technology exchange, and research, with an initial focus on reducing tropical deforestation.

Formally established in 2009 to implement the MOU provisions on deforestation, the GCF has expanded its membership and has emerged as a key focal point for global efforts to bring REDD+ into ongoing subnational, national, and international climate policy.

Since its inception, the GCF has been working to establish the elements of high-quality, jurisdiction-wide REDD+ programs and link them to various market and non-market opportunities. Over the past two years, under the Chairmanship of California (2009) and Amazonas and Pará (2010), the GCF has worked to:

- Mobilize and advance financing for REDD+ activities on a pay-for-performance basis;
- Provide input to the legal and regulatory design of emerging GHG compliance markets such as California;
- Develop high-quality sub-national REDD+ frameworks and capacity in large subnational jurisdictions in key tropical forest countries; and
- Develop institutions and frameworks for linking subnational REDD+ activities with ongoing national and international efforts.

The effectiveness of these efforts is apparent in the adoption of innovative REDD+ programs and activities across GCF states and provinces and in the ongoing elaboration of REDD+ architectures through the GCF process with stakeholders and partners from all over the world.



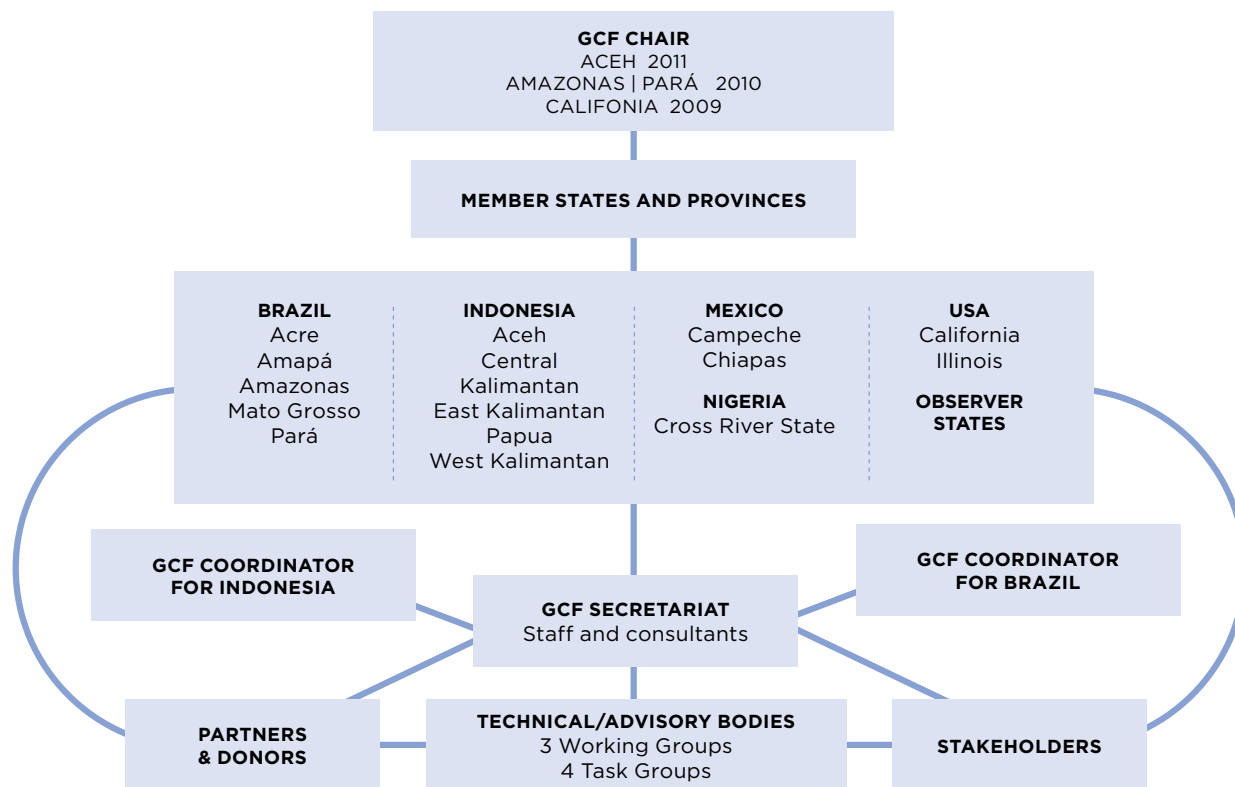
CALIFORNIA MOVES REDD FORWARD

Under Governor Schwarzenegger's leadership, California was a founding member of the Governor's Climate and Forest Task Force and has been very active in advancing subnational approaches to REDD. In developing the regulations for its Cap-and-Trade program, which include the world's first provisions for compliance-grade REDD activities, California drew directly on its work with the GCF. Going forward, California will continue to work with its GCF partners to establish a robust and high-quality program for sectoral crediting of REDD activities.

ACRE ENACTS LEGAL FRAMEWORK FOR REDD+

On October 22nd, 2010, Acre enacted State Law # 2308/2010, which created a State System of Incentives for Environmental Services (SISA), including a REDD+ "Carbon ISA Program." The law established a Regulation, Control and Registration Institute, a State Commission for Validation and Monitoring, an Agency for Development of Environmental Services, and other bodies to assist with the law's implementation. The law provides for civil society participation and explicitly incorporates social and environmental principles into the System. The full text of the law is available on the GCF website.

GOVERNORS



KEY GCF OBJECTIVES FOR 2011

In 2011, the GCF will concentrate its attention on several activities:

1. Developing a common subnational REDD+ framework or platform for adoption and implementation in GCF states and provinces;
2. Refining and enhancing the GCF Knowledge Database of REDD+ activities and needs in GCF states and provinces;
3. Developing options for linkage arrangements necessary to bring sector-based REDD+ credits from tropical forest GCF states and provinces into emerging GHG compliance systems such as California;
5. Establishing a GCF Fund to provide technical assistance and financial support for REDD+ capacity building in GCF states and provinces;
6. Continuing to facilitate cooperative efforts between GCF states/provinces and their respective federal governments; and
7. Promoting and advancing stakeholder involvement and transparency in all aspects of the GCF's work.



For the past two years, **Cross River State** has been implementing a two-year statewide moratorium on illegal logging. The moratorium was the result of a statewide stakeholder process. The Governor has funded and empowered a task force to arrest anyone caught illegally logging in the state. Cross River State also passed a new forest law to provide more empowerment to local communities and that opens the door to REDD finance. Forest carbon measurements have been carried out and Cross River State and Nigeria have been actively engaged with UN-REDD and the World Bank's Forest Carbon Partnership.



GCF SUPPORTERS

The GCF's activities have been generously supported by grants from The Gordon & Betty Moore Foundation, The ClimateWorks Foundation, and The David & Lucile Packard Foundation.



FOR MORE INFORMATION ABOUT THE GCF

William Boyd

GCF Secretariat, Senior Advisor and Project Lead
University of Colorado Law School, Professor of Law

TEL +1 303 492 7320

EMAIL William.Boyd@colorado.edu

Julie Teel

GCF Secretariat, Project Manager
University of Colorado Law School (CEES), Research Faculty

TEL +1 303 492 7252

EMAIL Julie.Teel@colorado.edu