



## Workshop Summary

# Developing and Monitoring REDD+ Projects: Learning from 1<sup>st</sup> generation of community-based implementations

Daniel Murdiyarso

THINKING beyond the canopy



the David  
Lucile Packard  
FOUNDATION





# CIFOR

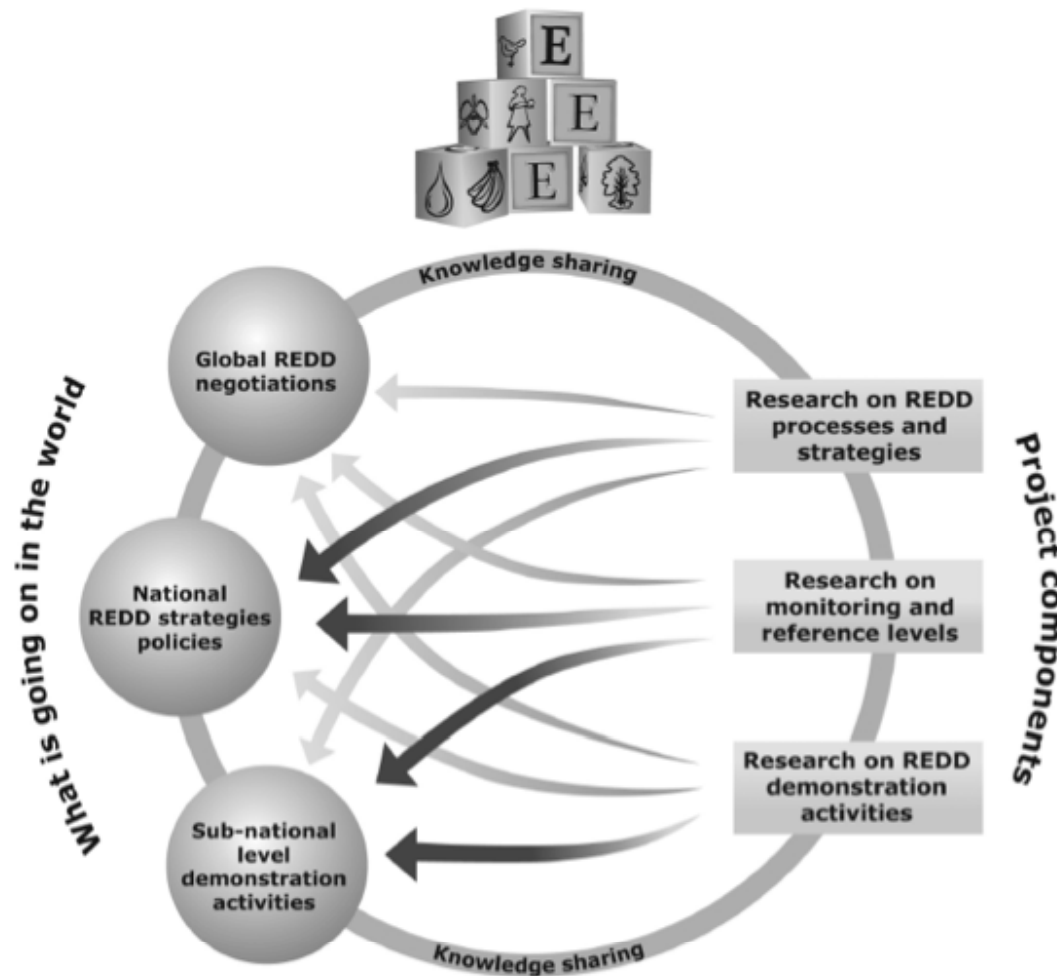
## A brief introduction

- Established in 1993
- One of 15 centres in the Consultative Group for International Agricultural Research
- Focus on forest policy research and global comparative studies
- Headquarters in Bogor, Indonesia
- 80 scientific staff working in the major forests of Southeast Asia, Africa and Latin America
- ‘Centre without walls’

THINKING beyond the canopy

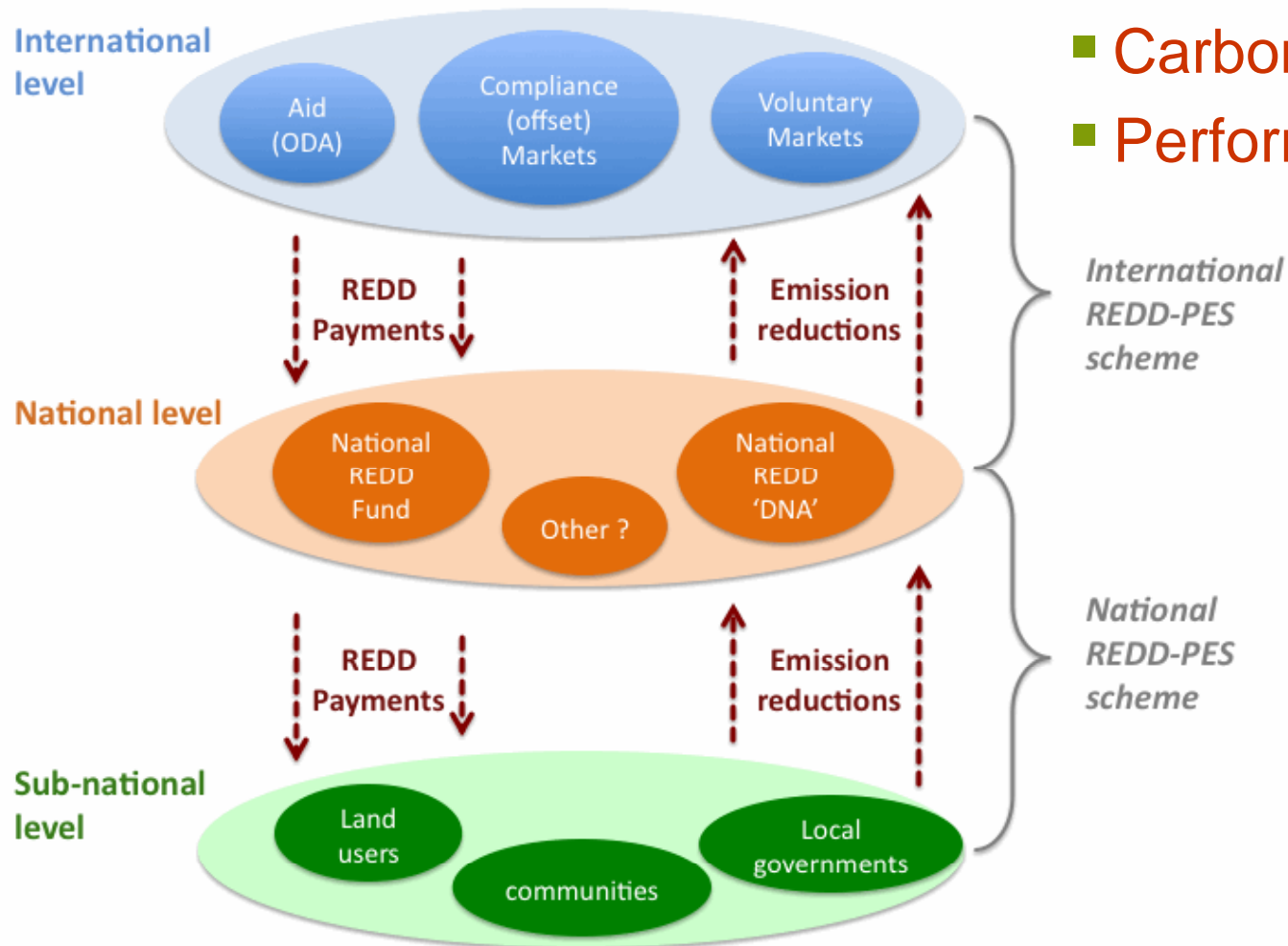


# Global Comparative Study on REDD (GCS-REDD)



- National REDD process and strategies (Component 1)
- REDD demonstration activities (Component 2)
- Monitoring and reference levels (Component 3)
- Knowledge sharing (Component 4)

# The core idea of REDD+



- Carbon value of forests
- Performance-based

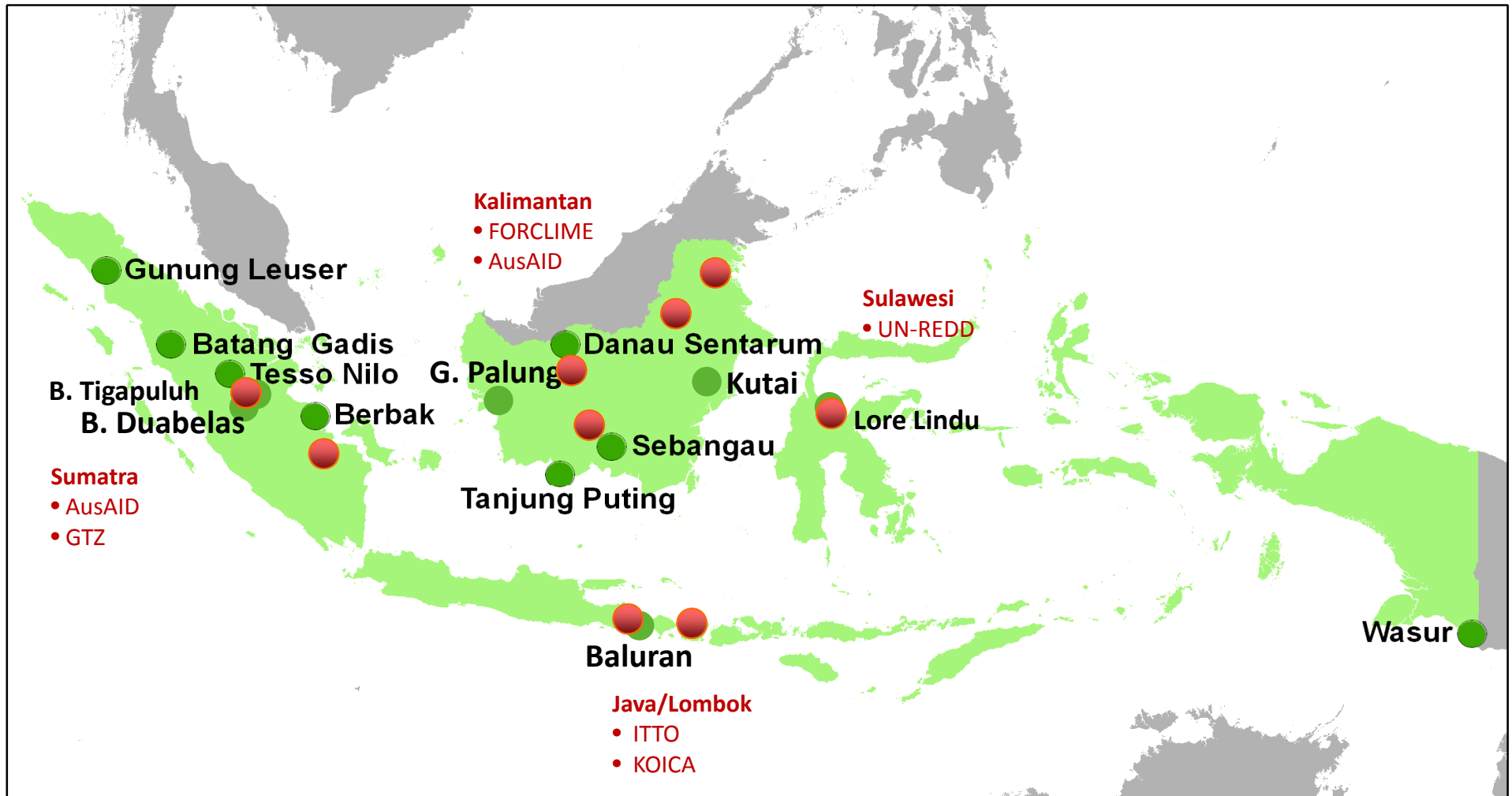


# The Juma Project - Amazonas

- CCB Standards – Gold Status
- September 2008

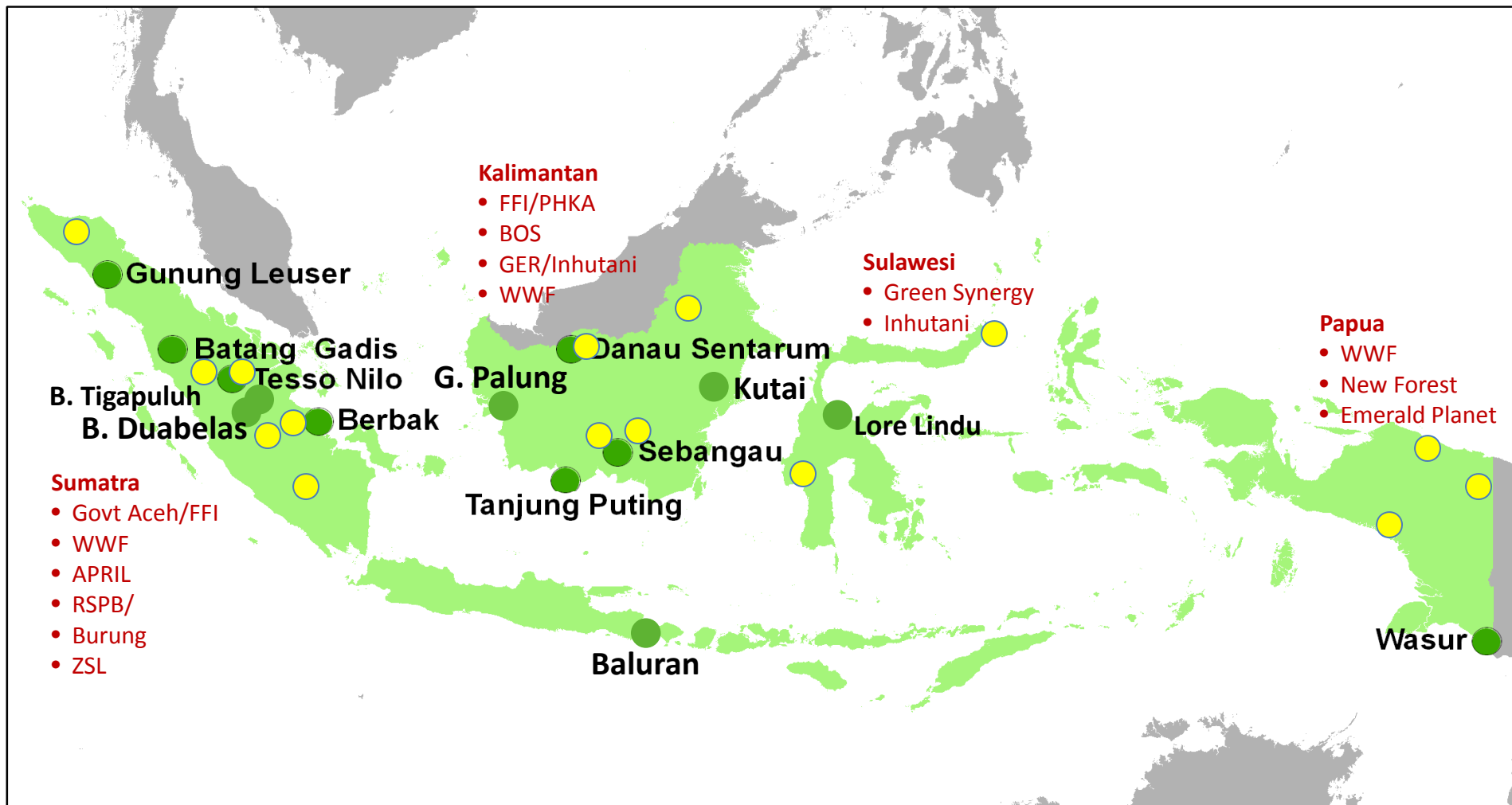


# National Parks and REDD Demonstration sites



As of April 2010

# National Parks and Voluntary REDD sites



As of April 2010

PETA TUTUPAN HUTAN TAHUN 2005/2006  
PROPINSI NANGGROE ACEH DARUSSALAM



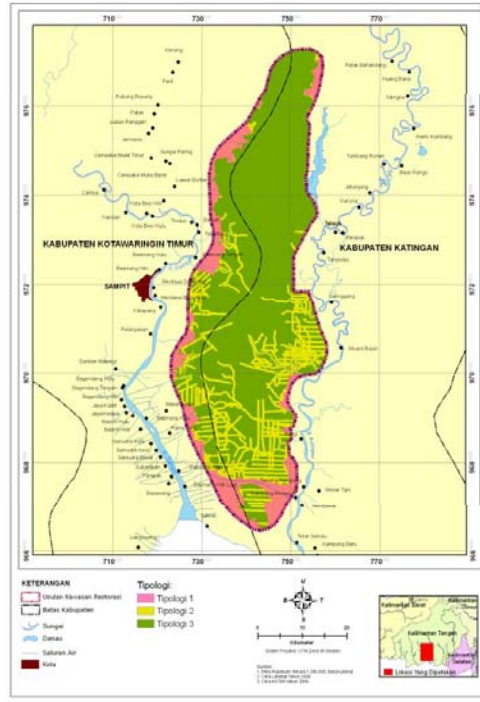
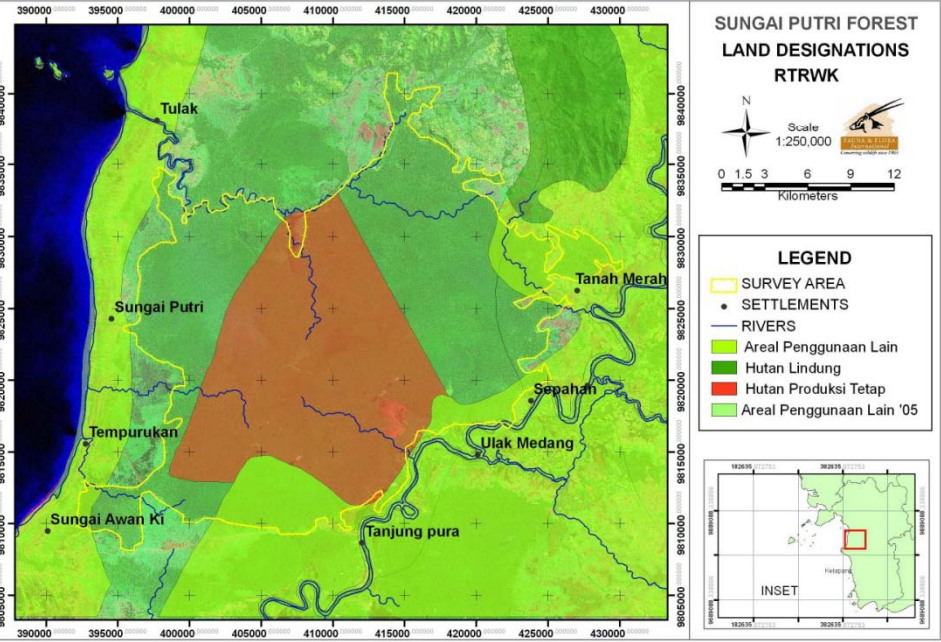
Proyeksi : Citographic Coordinate System  
 Sistem Grid : Citicraft  
 Datum Horizontal : WGS 1984

Skala Peta :  
 1:250.000 (Dataras datar)  
 1:250.000 (Dataras miring)  
 1:250.000 (Dataras miring)

Skala Peta : 1:250.000

LEGENDA

Warna Hijau Tua	Hutan Primer (250.000-400.000 ha)	Warna Biru	Sungai
Warna Hijau	Hutan Sekunder (100.000-250.000 ha)	Warna Putih	Lake
Warna Hijau Muda	Hutan rawa gambut (100.000-250.000 ha)	Warna Kuning	Saluran Air
Warna Hijau Muda	Hutan Mangrove (250.000-400.000 ha)	Warna Merah	Saluran Air
Warna Kuning	Sekolah (250.000-400.000 ha)	Warna Merah	Saluran Air



# Learning session

Project/Location	Adviser	Area (ha)	Characteristics
Juma, Amazonas, Brazil	IDESAM	589,612	<ul style="list-style-type: none"> <li>• Protected areas</li> <li>• Public donation</li> </ul>
Ulu Masen, Aceh	FFI	750,528	<ul style="list-style-type: none"> <li>• Under logging moratorium</li> <li>• Prov. Government</li> </ul>
Ketapang, West Kalimantan		25,000	<ul style="list-style-type: none"> <li>• Peatland</li> <li>• Oil palm development</li> </ul>
Kapuas Hulu, West Kalimantan		70,000 26,778	<ul style="list-style-type: none"> <li>• “Hutan desa”</li> <li>• Conversion forests/APL</li> </ul>
Katingan, Central Kalimantan	Starling Resource	227,260	<ul style="list-style-type: none"> <li>• Under restoration licensing</li> <li>• Private sector</li> </ul>

# REDD+ Project Development

## Community involvement

- Should be consulted at all steps of project development
- In most cases they are not the project owner
- Too much information, often fragmented and difficult to follow
- Capacity development
- Provide and enhance livelihoods opportunities

## Customary (*adat*) community and institution (e.g. *Mukim*)

- Access and rights to the resources (incl. land tenure)
- Social and environmental safeguards
- Representation in managing projects
- Capacity development
- Livelihood options

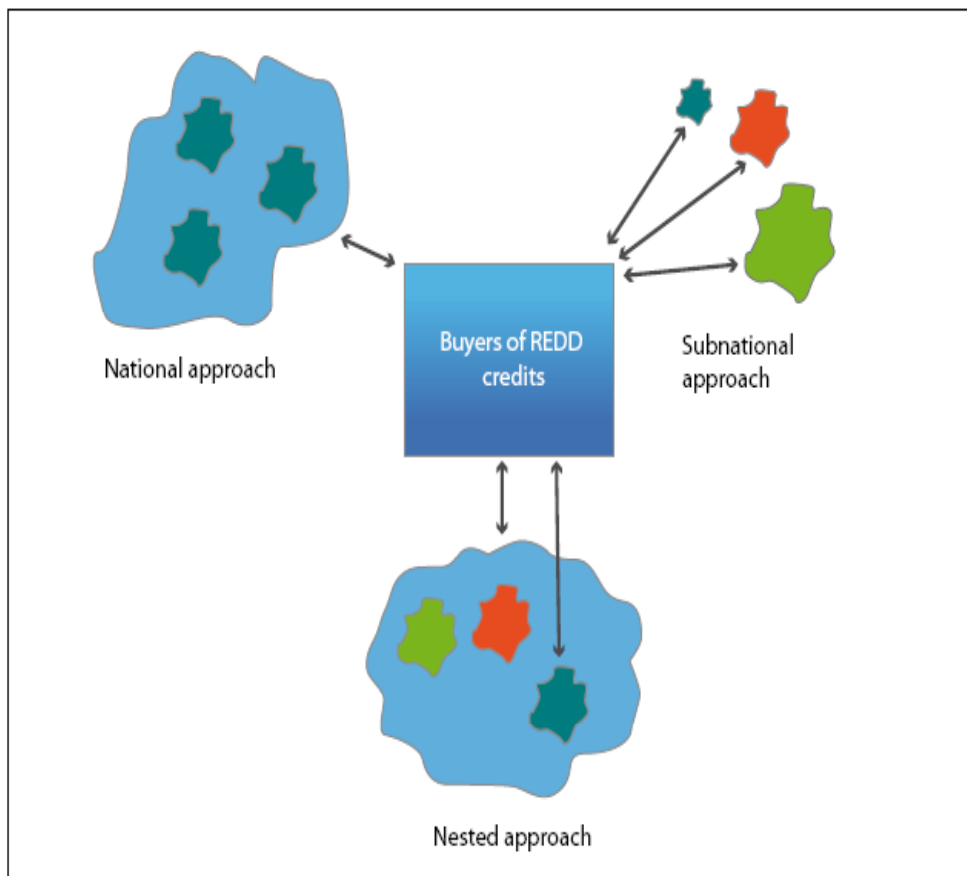
➔ Takes time, no short cut

➔ Trust building needed

# REDD+ Project Monitoring

- **Monitoring development process at sub national level**
  - FPIC as a stepwise process
  - Community legal standing/status
- **Carbon monitoring → cost-efficient**
  - Methodologies and tools
  - Choice of standard
  - Community-based monitoring → lack of capacity
- **Relationship with national processes**
  - Law no.11/2006 – national resources (Aceh Autonomous Gov)
  - National/federal – sub national/local (Law n.26.010)
  - Link with national regulations (P.30/2009, P.36/2009)
  - National registry system
- **Monitoring policy and strategic processes at global level**
  - UNFCCC processes
  - GCF processes

# Approaches and scales



## National approach

- Creates country ownership
- Addresses domestic leakage
- Susceptible to governance failures
- Less likely to mobilize private investment

## Sub-national

- Allow early action and wide participation
- Susceptible to domestic leakage
- Cannot address wider driving forces of deforestation and forest degradation

## Nested approach

- Allows early start with sub-national activities and gradually move to a national approach
- Challenges to harmonize two levels



# Terimakasih

[www.cifor.cgiar.org](http://www.cifor.cgiar.org)

[www.forestsclimatechange.org](http://www.forestsclimatechange.org)



CIFOR advances human well-being, environmental conservation, and equity by conducting research to inform policies and practices that affect forests in developing countries.

THINKING beyond the canopy

