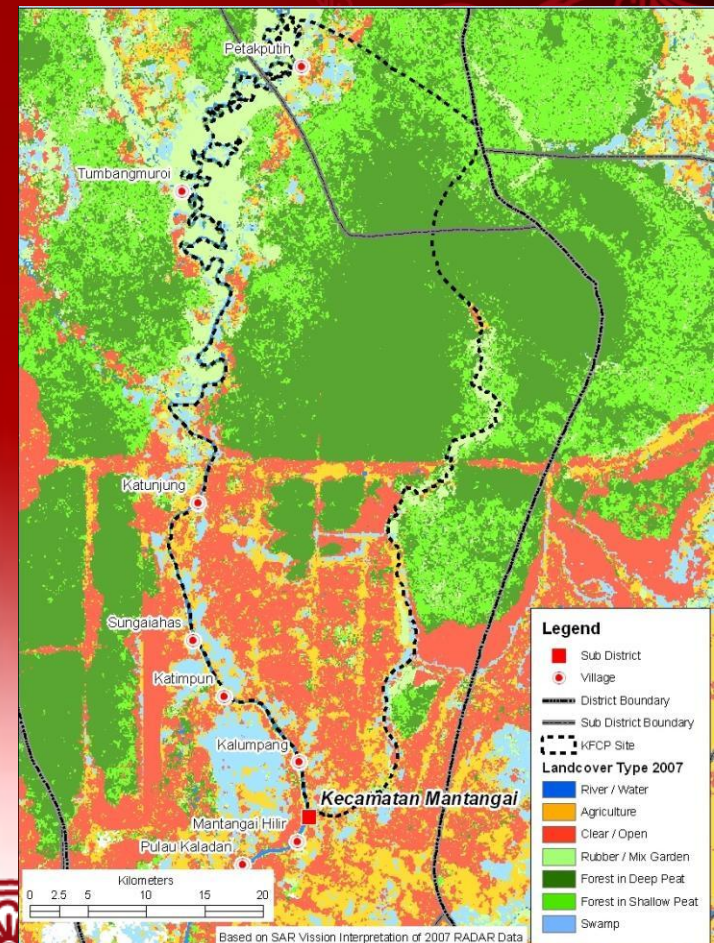




Australian support for demonstration activities at the provincial level



- **Kalimantan Forests and Climate Partnership** is a REDD demonstration activity in Central Kalimantan
- First demonstration activity under the Indonesia – Australia Forest Carbon Partnership
- Responds to the Bali Action Plan
- Focused on reducing GHG emissions from 130,000 ha of peat swamp forest and degraded peatlands
- Is trialling approaches to REDD+ to provide lessons to help inform UNFCCC negotiations on REDD





Australian support for demonstration activities at the provincial level

KFCP interventions aim to:

- Implement REDD+ in peat swamp forest and degraded peat lands by:
 - improving forest management practices
 - preventing and managing fires
 - rehabilitating peat hydrological systems to reduce degradation
- Test methodologies for GHG measurement, including from peat, linking with Indonesia's national MRV systems as they develop
- Trial incentive payments for REDD at the local level
- Build local capacity to participate in a future REDD mechanism



Photo credits: WWF, IAFOP, Martin Hardiono



Australian support for demonstration activities at the provincial level : progress to date

Early steps are helping to build confidence in REDD and provide important lessons for the UNFCCC

- Baseline surveys of forest, peat land, and socio-economic situation completed
- GHG methodology developed and systems for measuring and monitoring emissions in place
- Trust fund established to finance REDD incentive payments
- Early work on institutional and management arrangements for REDD
- Support for provincial and district capacity building

