

From REDD Plus to Low Carbon Growth Strategy: An opportunity for Provincial Actions

Doddy S. Sukadri
Indonesia National Council on
Climate Change
(The DNPI)



Banda Aceh, 18 May 2010

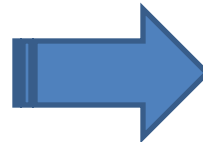
Indonesia National Council on Climate Change -NCCC (the DNPI) President Regulation # 46 /2008



ORGANIZATION

Chairman : President of Indonesia
Vice Chairmen: Coord. Minister of Economics ; Coord. Minister of Social Welfare

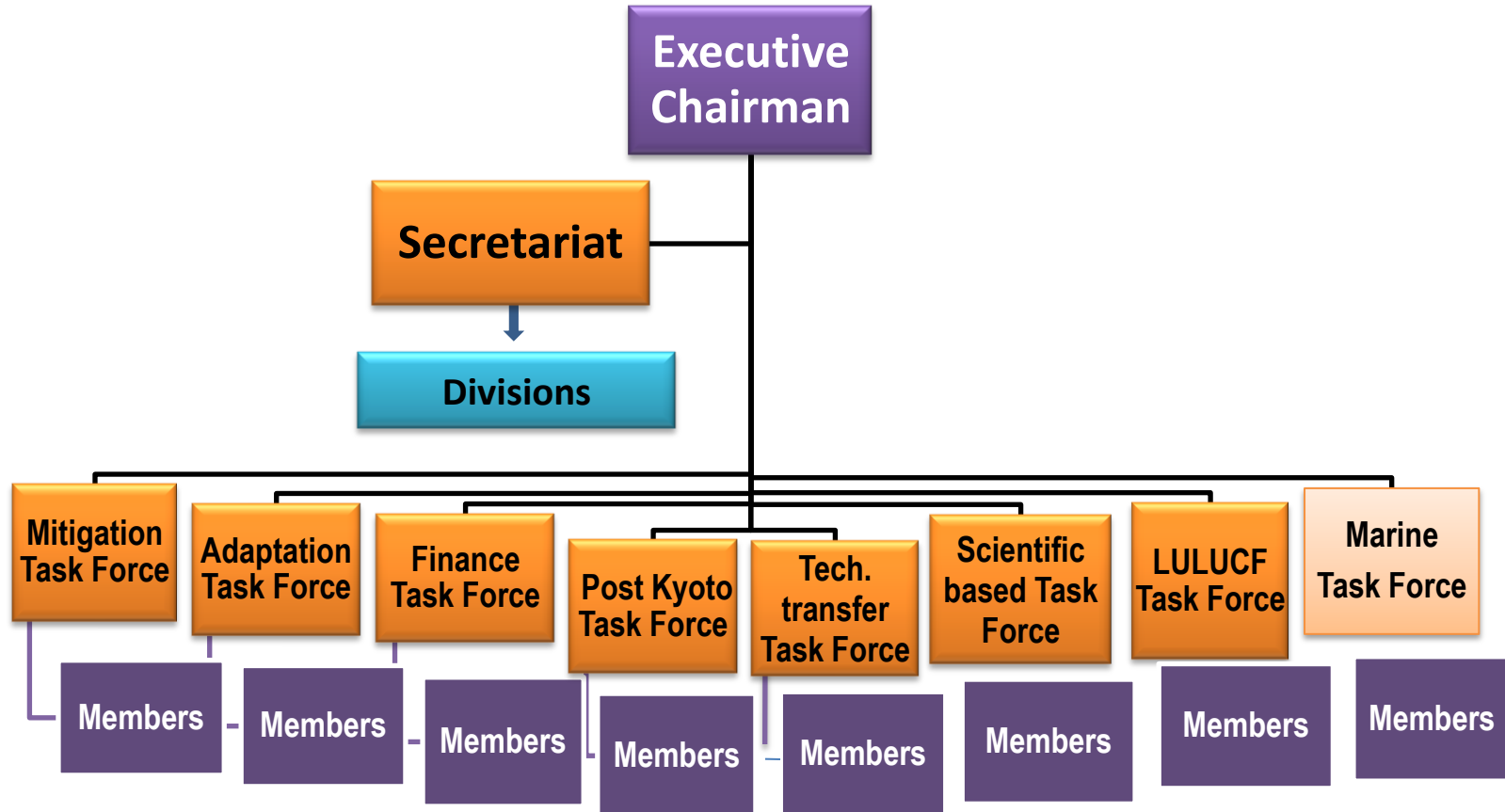
Members:
Ministers of : Forestry Environment, Finance, Home Affairs, Foreign Affairs, Energy and Mining,, Agriculture, Industry, Public Works, Fishery and Marine, Trade, Transportation, Health , and
Heads of: Development Planning/ BAPPENAS, Research and Technology Assessment, Meteorology and Geophysics Agency, State Secretary, Cabinet Secretary.



MANDATES

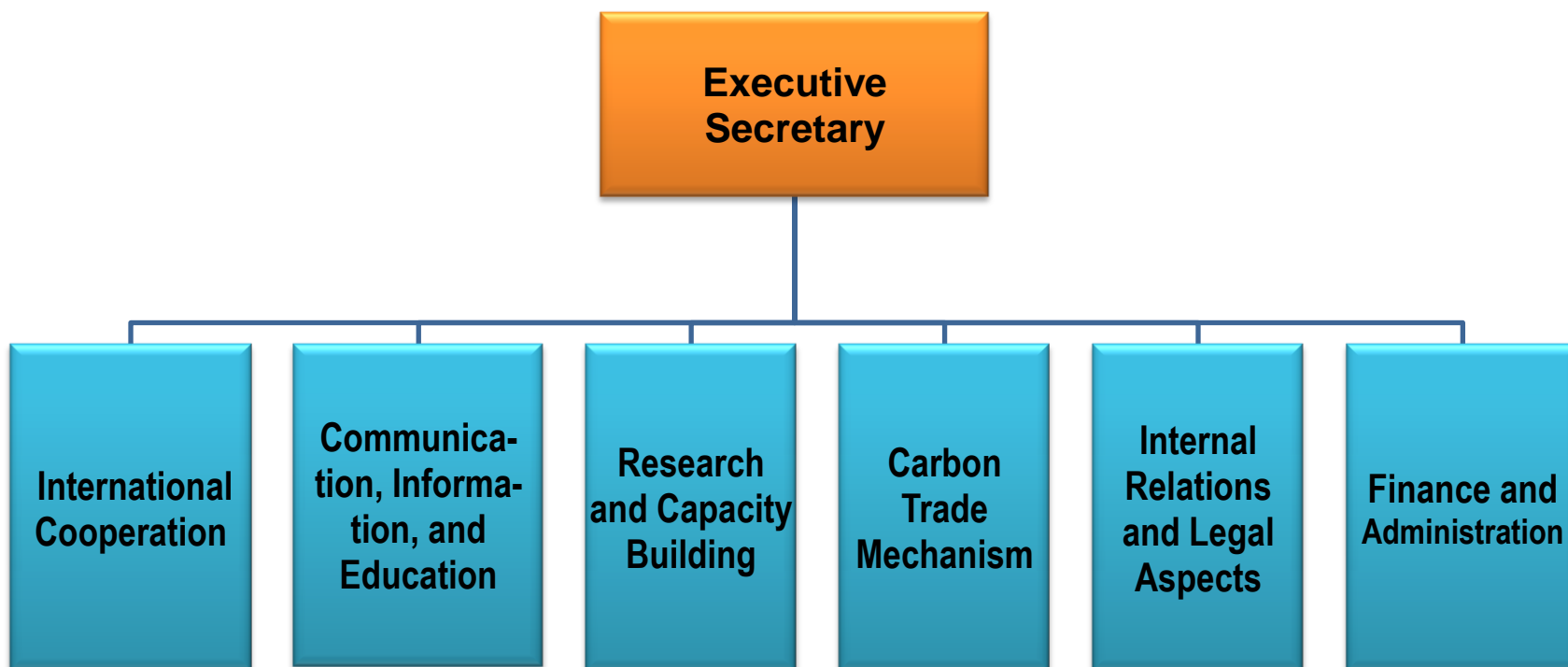
1. National policies, strategy, program and activities on climate change
2. Sector coordination for CC-related activities
3. Carbon trade mechanisms and procedures
4. Monitoring and evaluation
5. International focal point

Organizational structure



Chairmen and members of the Task Force comprise of relevant stakeholders, including government officials, NGOs, private sector, academician, professionals

Divisions within the Secretariat of the Council



The Copenhagen Accord is short, but opens the door for real change

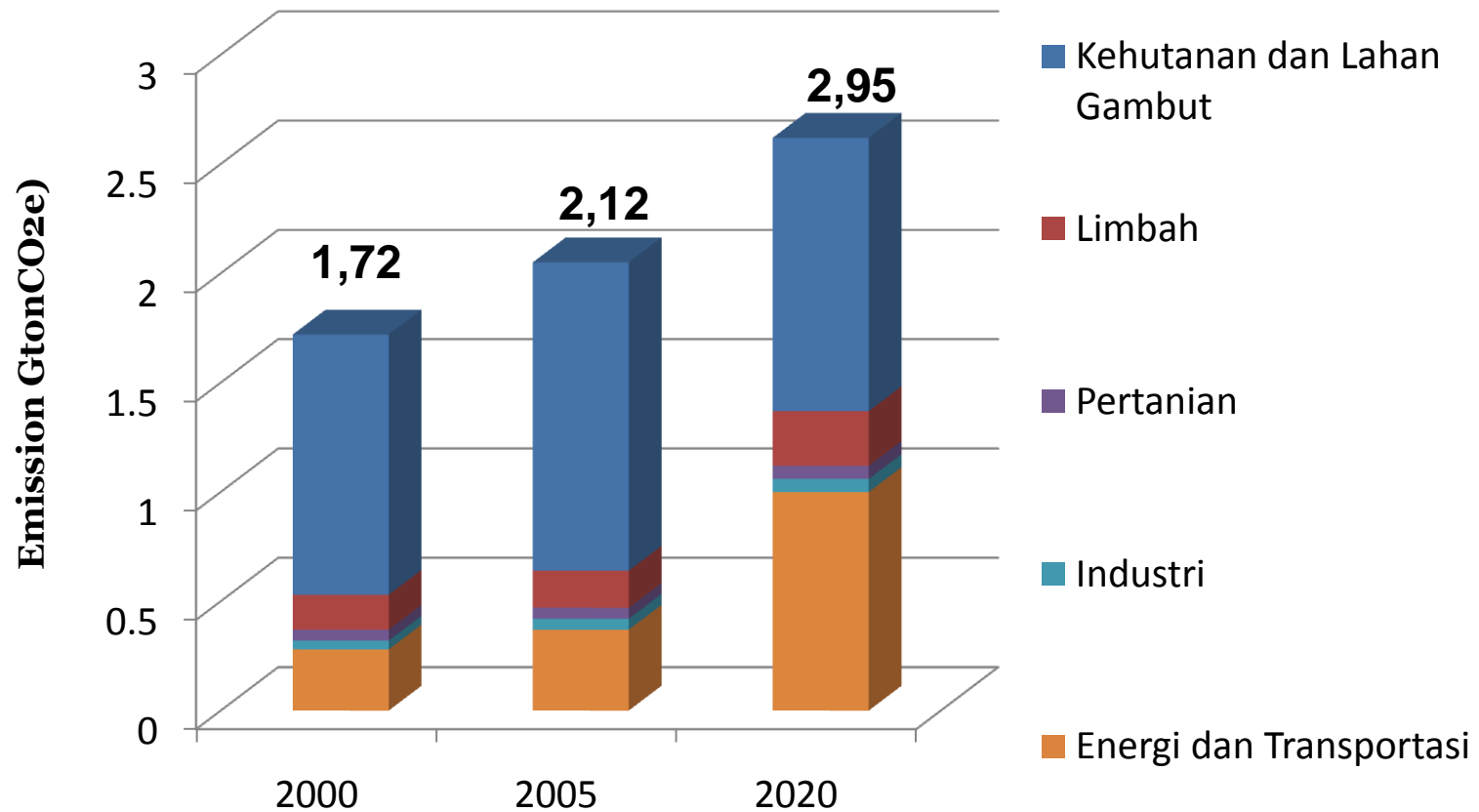
From the Kyoto Protocol ...

- Emission reductions focused on developed world (Annex 1 countries)
- No coverage of forestry and agriculture
- International funding limited to CDM/JI mechanism
- UNFCCC 80% of the game
- **Environmental treaty**

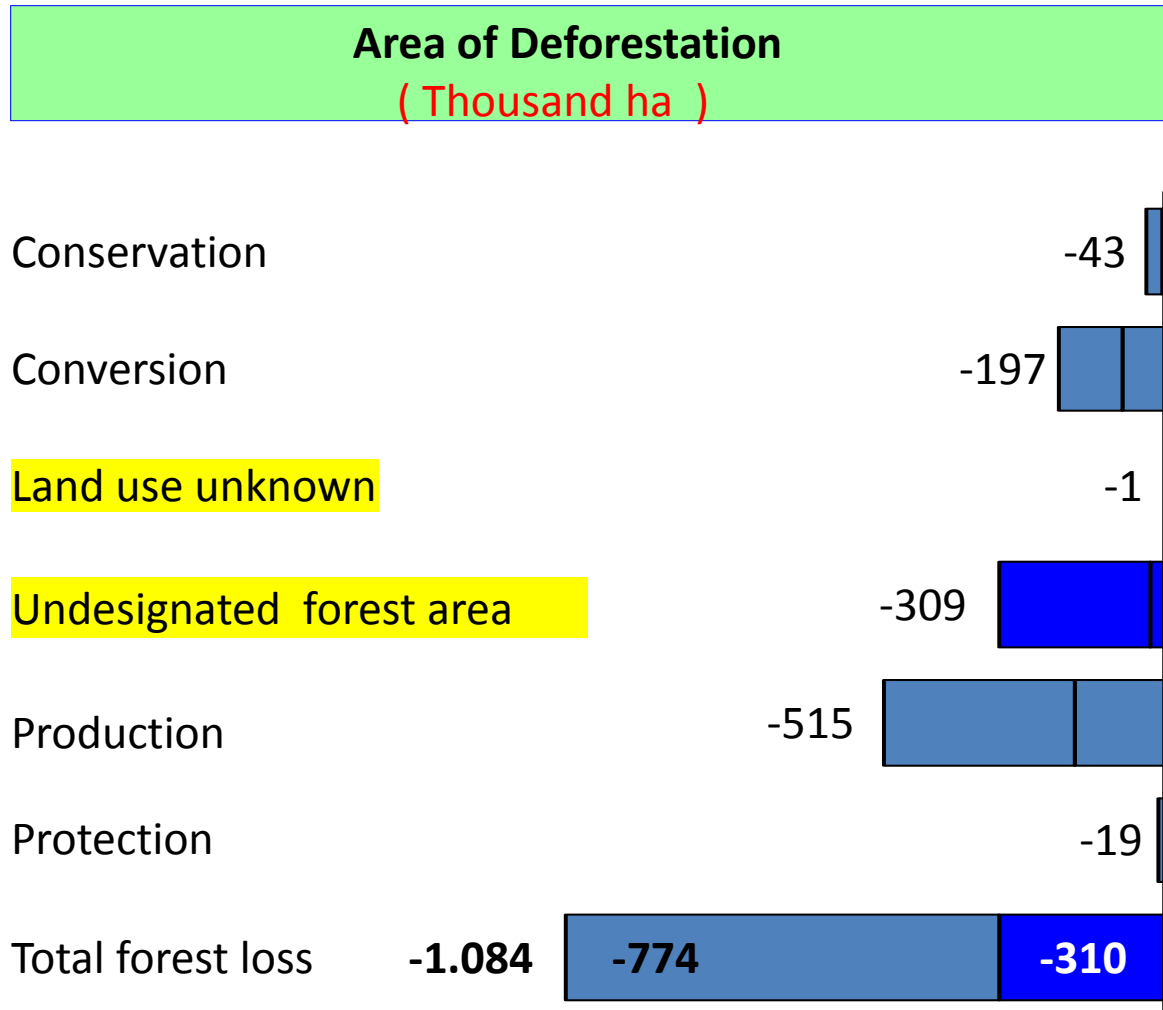
... to the Copenhagen Accord

- Covers mitigation in all countries, i.e., both developed and developing world
- Covers all sectors, specifically recognizing importance of forestry and land-use
- Provides \$30b in fast-start funding (2010–12); acknowledges need for \$100b financing by 2020
- UNFCCC 20% of the game
- **Economic transformation programmes**

Indonesia's Emission Profile (2020 BAU Scenario)

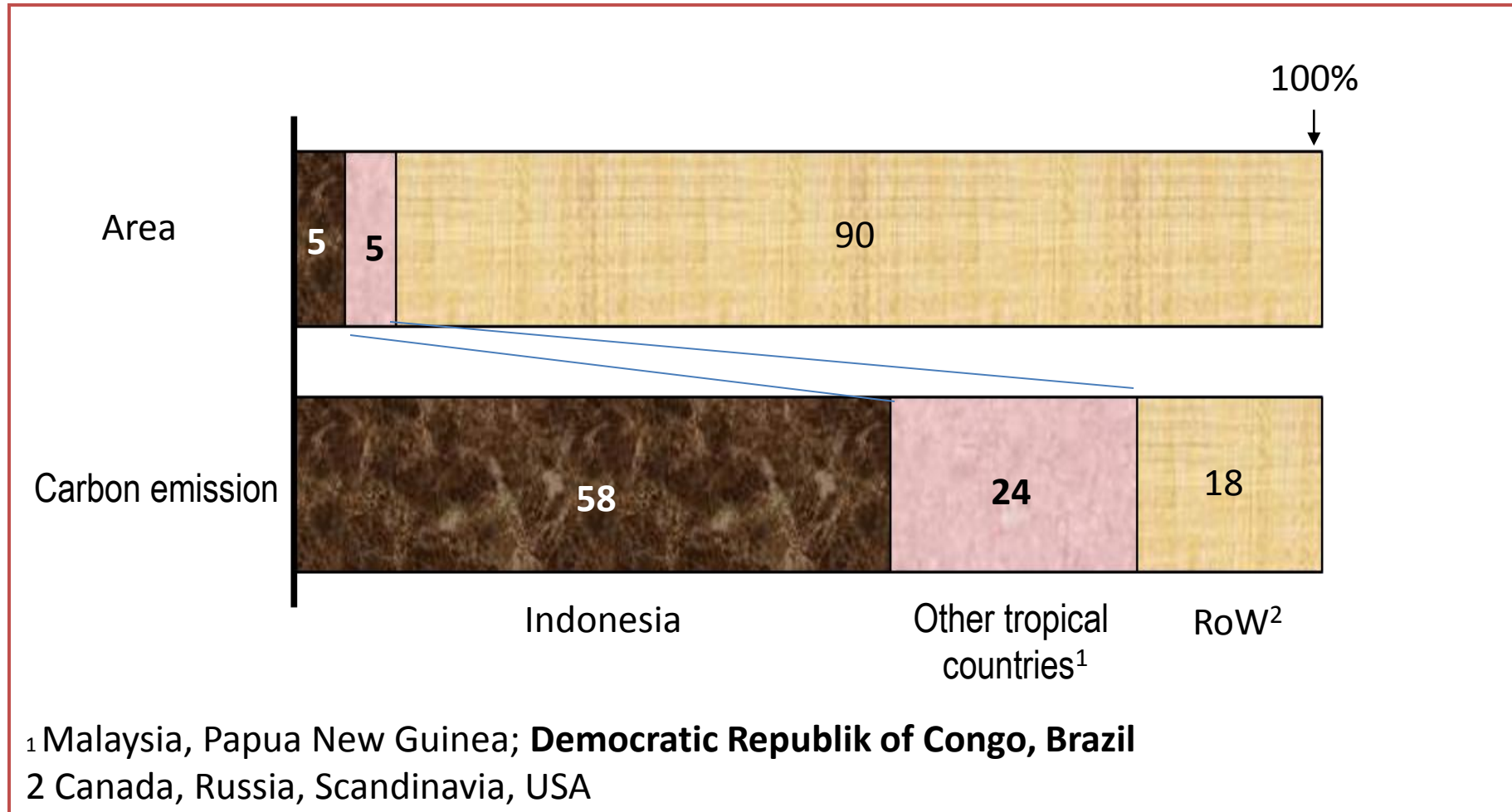


While 71% of deforestation is taking place within designated forest area, the rest is happening outside of the forest lands...



Peatland

Is suspected to contribute > 50% of global emission from the decomposition

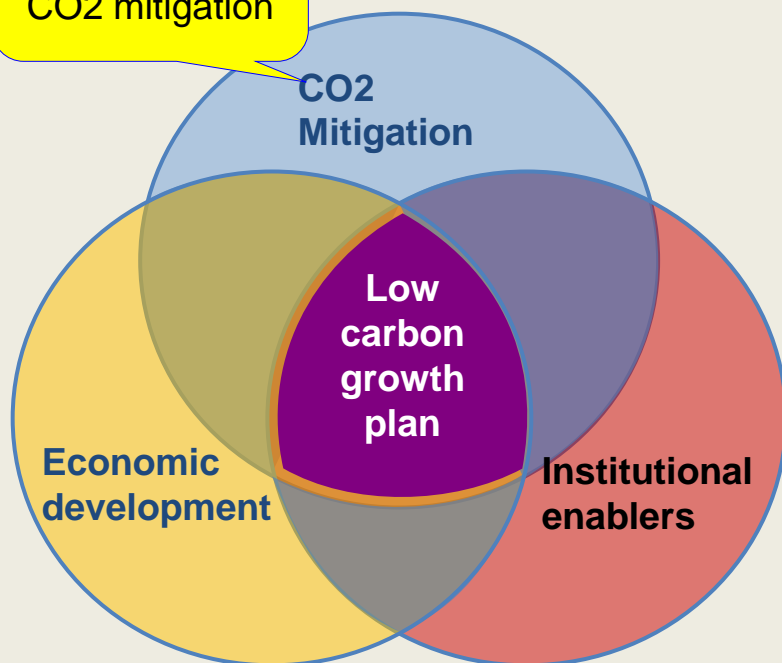


A holistic approach to low carbon growth is needed in which economic growth and CO2 mitigation go hand in hand



Framework for Low-Carbon Growth Plan

REDD+ is one component of CO2 mitigation



Key elements

CO2 Mitigation

- Estimate the size of current and future emissions (**including REDD+**)
- Assess the technical abatement potential and feasibility, and implementation cost of individual mitigation initiatives

Economic development

- Analyse existing competitive strengths and weaknesses
- Explore potential new sources of growth (requiring less carbon emissions)

Institutional enablers

- Develop strategy for critical enablers (e.g., monitoring and evaluation, spatial planning, community engagement)
- Estimate the total costs of realizing these opportunities

Low Carbon Growth Strategy: Example of Central Kalimantan

Establishing community-based fire brigades



Zero-burning program (with support for non-fire methods of land clearing)

Campaign to stop forest and peat fires



Revitalization of community-based rubber plantations

Tree planting on abandoned lands

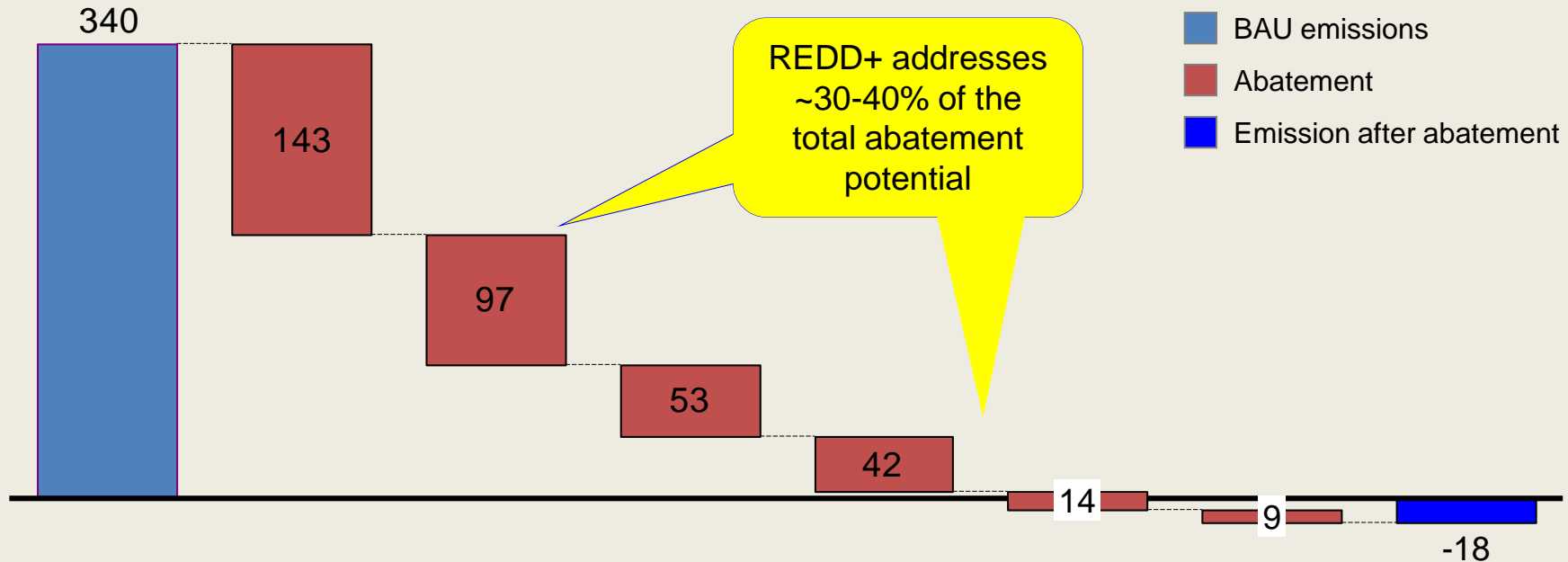


Central Kalimantan's rich forests have the potential to turn the province into a net carbon sink



Projected abatement potential

Million tons, CO₂e



2030 BAU

Prevent fires

Land usage

Peatland rehab.

Sustain. forest mgt

Re-forestation

Other

2030 low emissions

1

2

3

4

5

Percent of total reduction potential

40

27

15

12

4

2



Let us

UNITE TO COMBAT
CLIMATE CHANGE

THANK YOU