





BFCP / TNC support development of a wide REDD program in Berau, East Kalimantan addressing all 3

LEVEL	STRATEGY CATEGORY	STRATEGY CATEGORY
National Level	<ol style="list-style-type: none"> <li>1. Policy interventions to tackle drivers of Deforestation and Forest Degradation</li> <li>2. REDD regulations (REDD Guidelines and REDD Commission)</li> <li>3. <b>Methodology</b> (establishment of National REL and MRV system)</li> <li>4. <b>Institutional</b> (capacity building, stakeholders communication, coordination among REDD institutions)</li> <li>5. <b>Analytical works</b> (REL, MRV, co-benefits, risks, etc.)</li> </ol>	<ol style="list-style-type: none"> <li>1. <b>Methodology</b> (establishment of District REL and MRV system)</li> <li>2. <b>Institutional</b> (capacity building, stakeholders communication, coordination among REDD institutions)</li> </ol>



LEVEL	STRATEGY CATEGORY	LEVEL	STRATEGY CATEGORY
District Level	<ol style="list-style-type: none"> <li>1. <b>Methodology</b> (establishment of District REL and MRV system)</li> <li>2. <b>Institutional</b> (capacity building, stakeholders communication, coordination among REDD institutions)</li> <li>3. <b>Demonstration</b> activities, voluntary carbon projects</li> </ol>	Provincial Level	<ol style="list-style-type: none"> <li>1. <b>Methodology</b> (establishment of Provincial REL and MRV system)</li> <li>2. <b>Institutional</b> (capacity building, stakeholders communication, coordination among REDD institutions)</li> <li>3. <b>Demonstration</b> activities, voluntary carbon projects</li> </ol>





# Methodology – Progress



- Historical emissions analysis
  - Land cover class maps 1990, 2000, 2005, 2008
  - Time-averaged carbon stock estimates for each class
  - Institutional (capacity building, stakeholders communication, coordination among REDD institutions)
- Detailed analysis of emissions factors from logging operations
- Development of alternative approaches for REL development
  - Historical projection
  - Spatial plan-based
  - Spatial modeling based on historical patterns

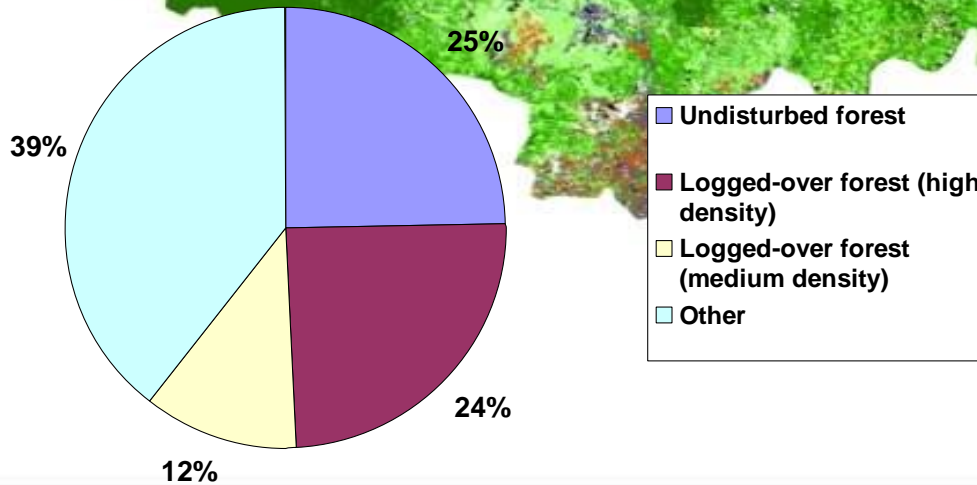
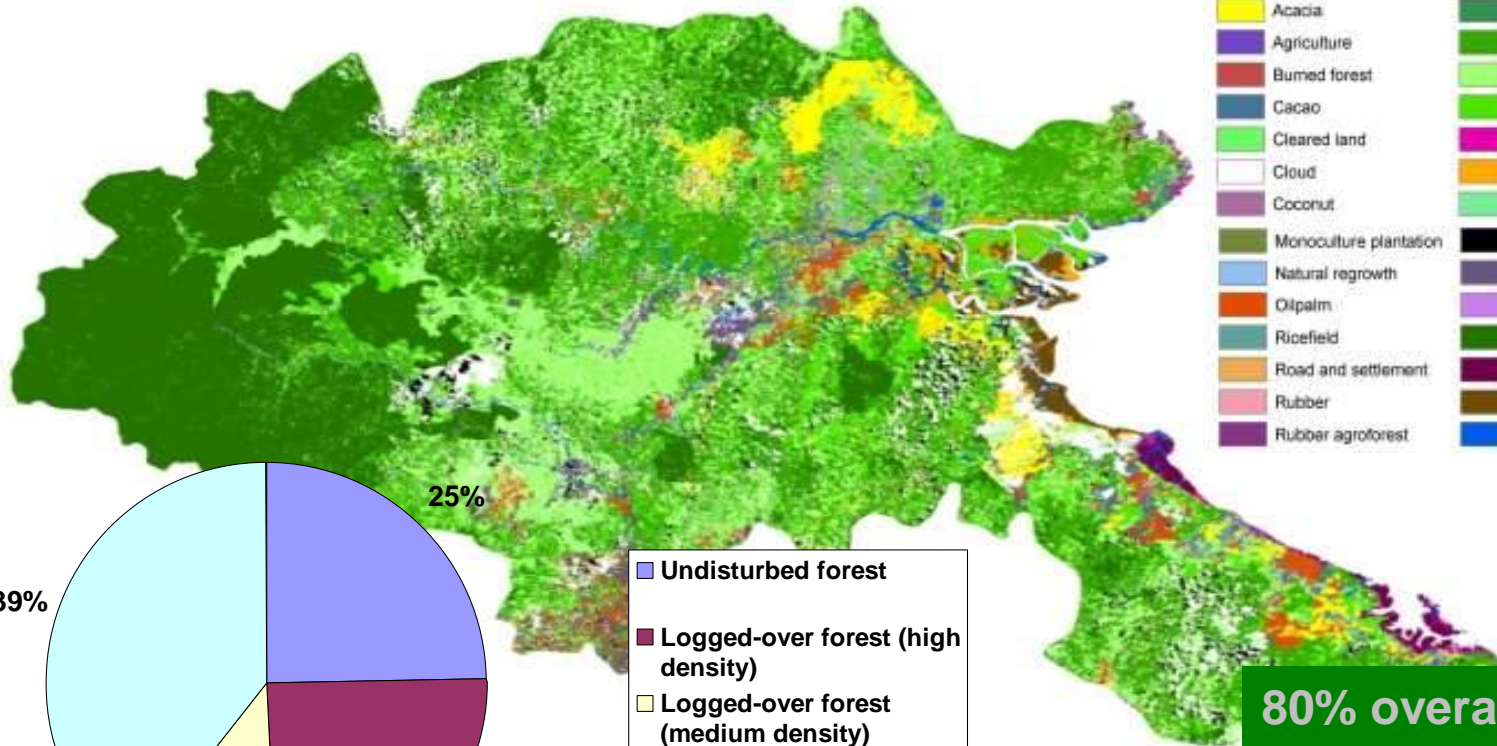




## LAND COVER MAP 2005, BERAU DISTRICT, INDONESIA

### LEGEND :

Acacia	Grass
Agriculture	Logged over forest-high
Burned forest	Logged over forest-low
Cacao	Logged over forest-medium
Cleared land	Logged over mangrove
Cloud	Logged over swamp
Coconut	Mixed garden
Monoculture plantation	Shadow
Natural regrowth	Shrub
Oilpalm	Teak
Ricefield	Undisturbed forest
Road and settlement	Undisturbed mangrove
Rubber	Undisturbed swamp
Rubber agroforest	Water surface

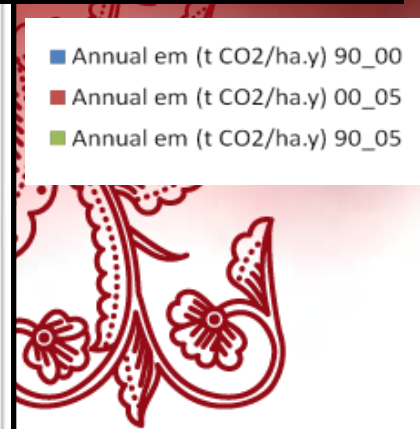
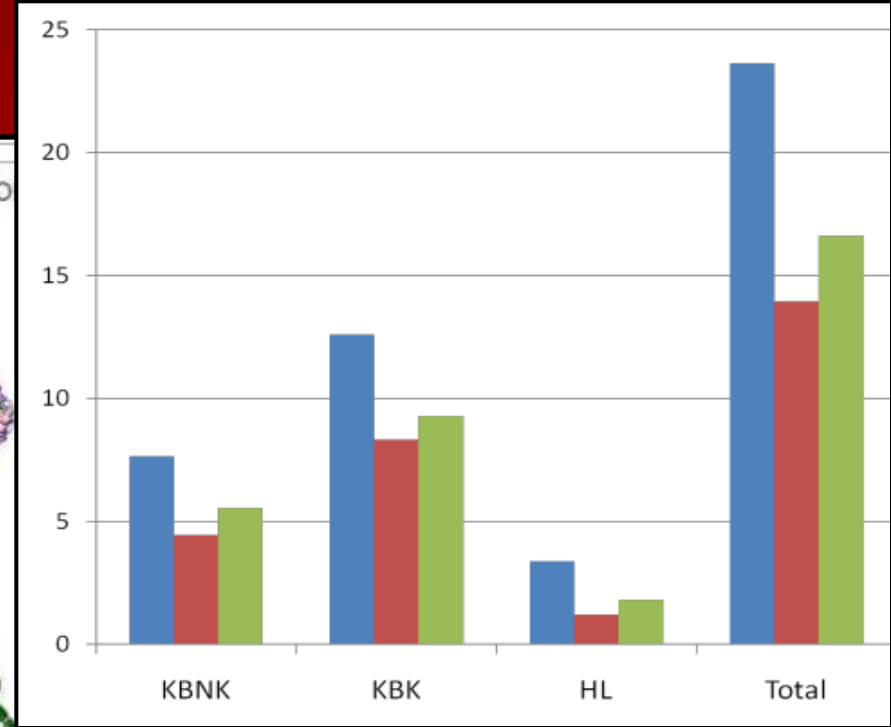
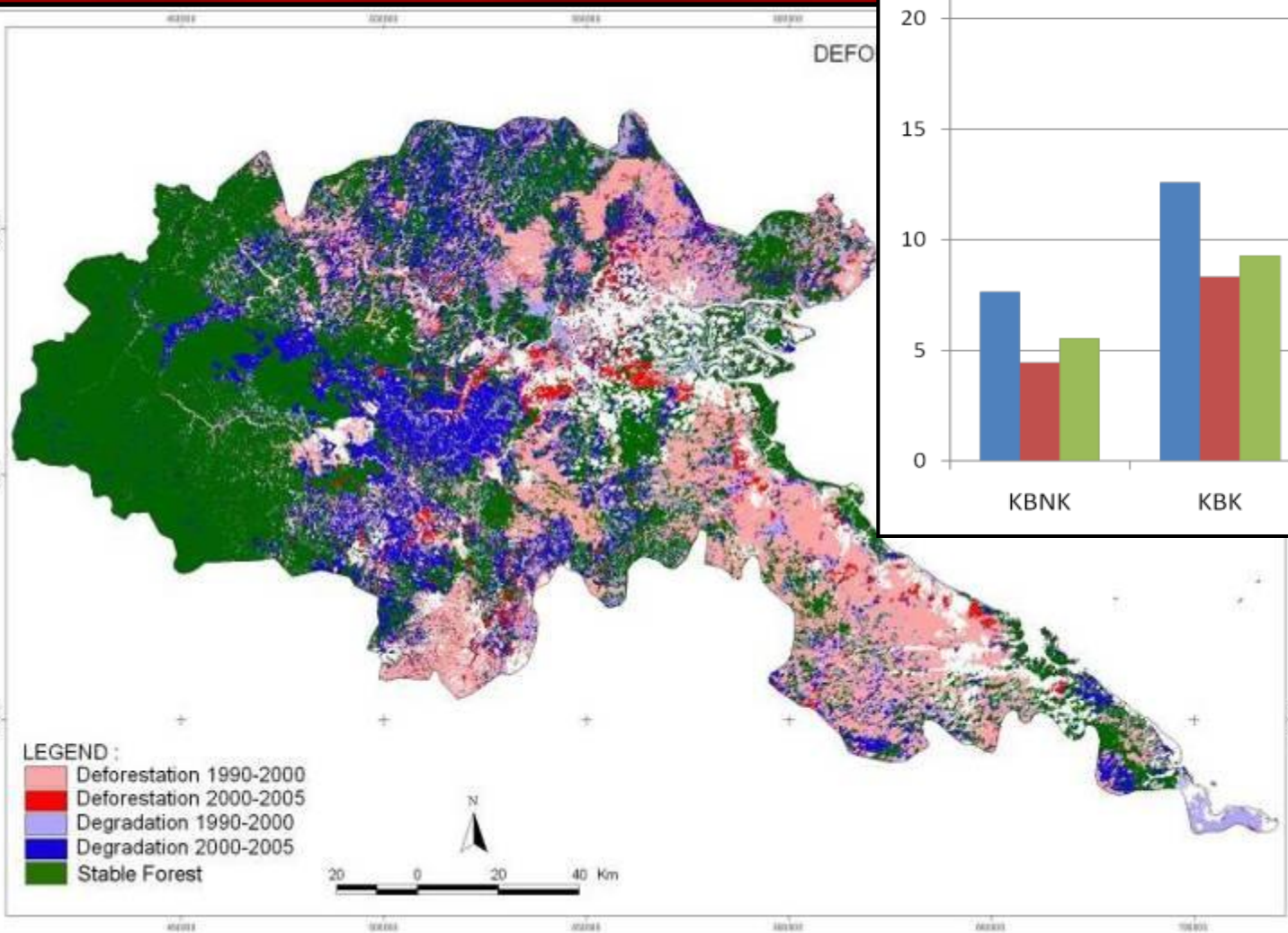


**80% overall forest**  
**61% undisturbed and medium to high density forest**



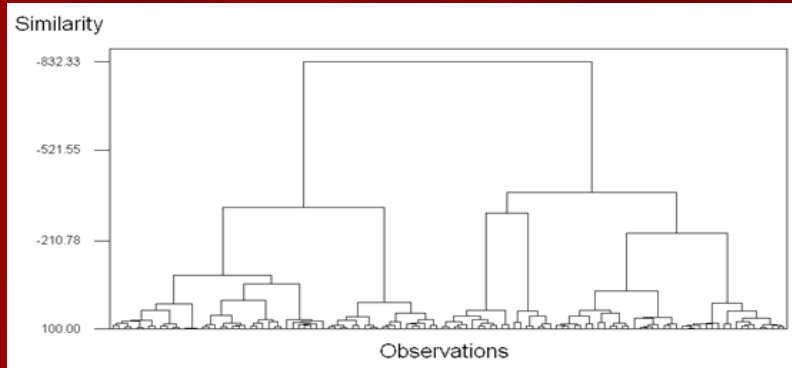


# Preliminary Results



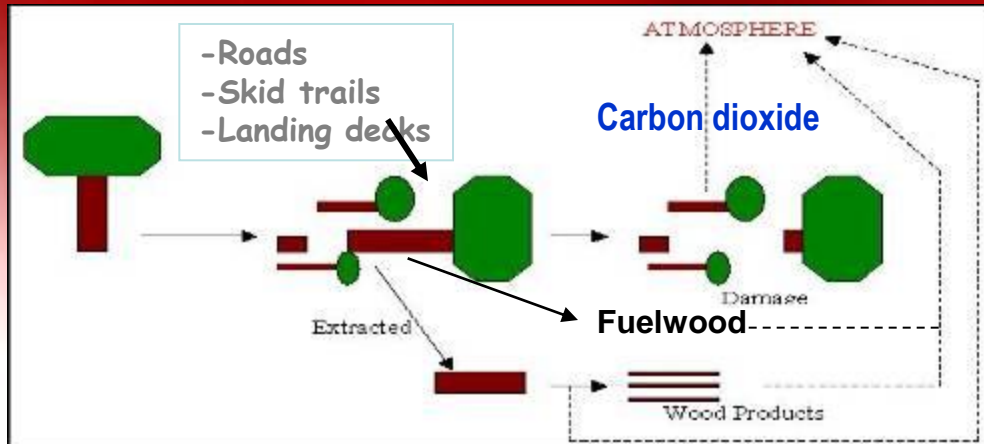
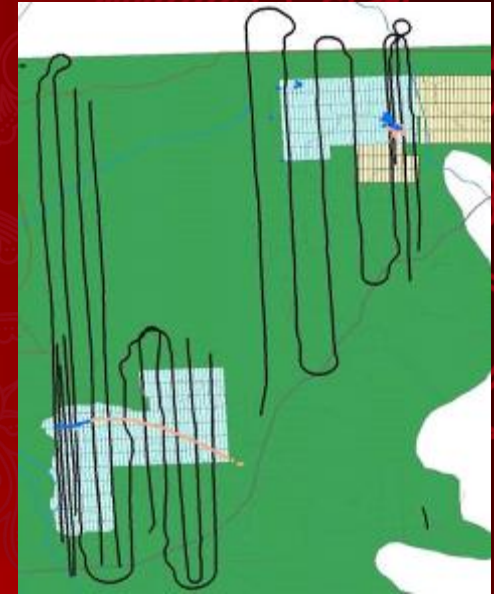


# Logging Emission Factors

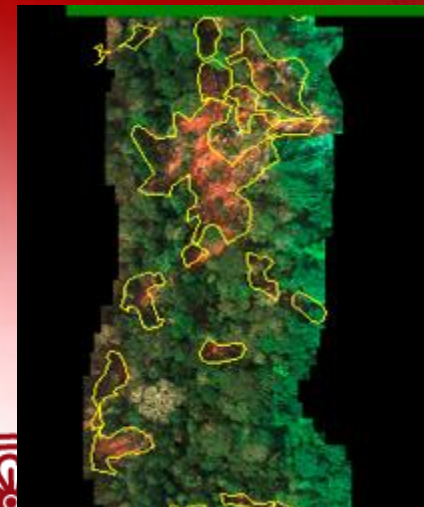


1. Stratify concessions (landforms, distance to market, landcover, etc.)

2. Flyovers and high-resolution photography



4. Field measurements



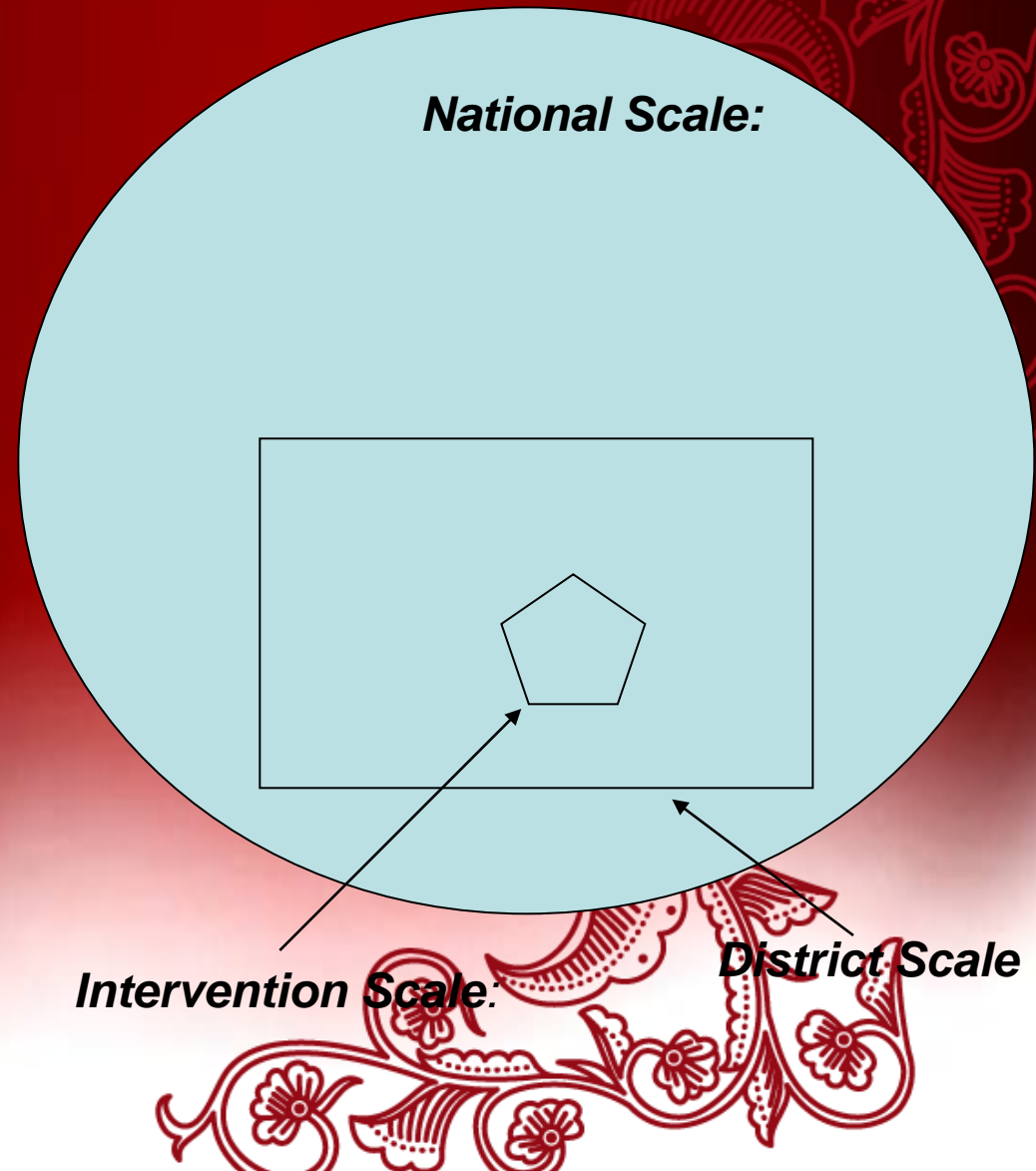
3. Analysis of photography



# MRV – Planned Activities



- Demonstrate credible, affordable, & state-of-the-art accounting of forest carbon emissions avoided.
- Nest program/project accounting within province, national, and international accounting systems
- Inform emerging national and global REDD frameworks.
- Verify accounting with leading standards.





# Institutional – Progress



- **Stakeholder communication and coordination**
  - Development of Berau District working group
  - Facilitation of joint meetings and program development between District, Provincial, and National working groups
  - Series of REDD trainings
- **Capacity building**
  - GIS training for District Government
  - Training on forest and land management
  - Carbon accounting training





# Institutional – Planned Activities



- Governance, institutions, legal framework, and management/technical capacity developed to support REDD implementation
- REDD awareness established in all stakeholder groups
- Government spatial planning capacity increased to support strategic development planning and REDD planning and monitoring
- Community land mapped, property rights documented, and socioeconomic baseline established in target communities
- Alternative livelihoods and community development incentives developed, tested, and implemented

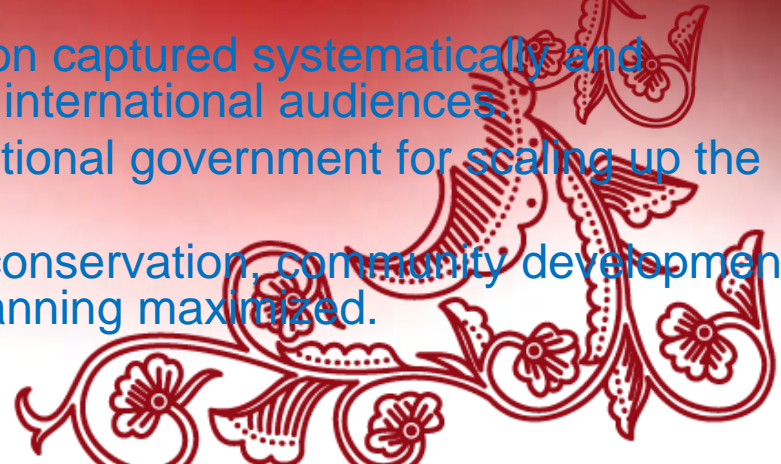


# Demonstration Activities – Planned



**For a Berau-wide demonstration program; deeper focus in particular areas:**

- Emission reduction strategies
  - Timber concession management improved to international standard in target concessions, and associated REDD benefits demonstrated.
  - Forest degradation in Protection Forests and Protected Areas significantly decreased.
  - Oil palm plantation siting rationalized to reduce deforestation.
  - Methods explored for reducing GHG emissions from other land uses such as timber plantations and mines.
- Learning and co-benefits
  - Learning from Berau demonstration captured systematically and communicated to Indonesian and international audiences
  - Recommendations provided to national government for scaling up the BFCP approach.
  - BFCP co-benefits in biodiversity conservation, community development, governance, and development planning maximized.





# Demonstration Activities – Progress



Substantial effort and progress in design for district-scale demonstration program

- Implementation framework
  - Supervisory Council, Project Management Unit, Trust fund
- Creation of enabling conditions for REDD
  - Development of strategies for improving governance, spatial planning, community involvement
- Site-based emission reduction strategies
  - Development of strategies for working with timber concessions, oil palm sector, and protection forest
- Carbon accounting system





# Current Activities

