



Governors' Climate & Forests Task Force National Coordinator Overview Indonesia

Avi Mahaningtyas
Kemitraan

GCF Secretariat Indonesia
Palangkaraya, September 21, 2011



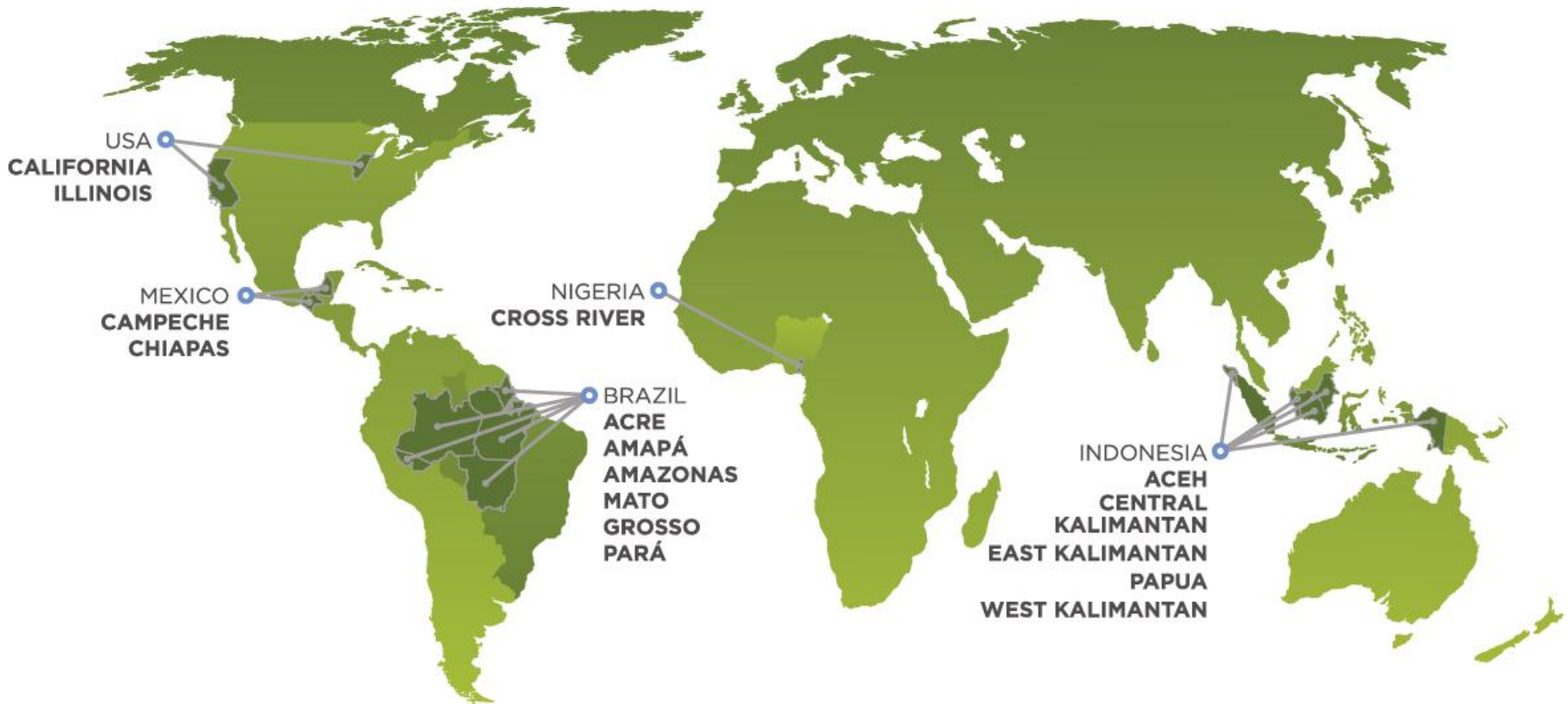
www.gcftaskforce.org

BRAZIL Acre, Amapá, Amazonas, Mato Grosso, Pará
INDONESIA Aceh, Central Kalimantan, East Kalimantan, Papua, West Kalimantan
MEXICO Campeche, Chiapas | NIGERIA Cross River State | USA California, Illinois





GCF Member States / Provinces

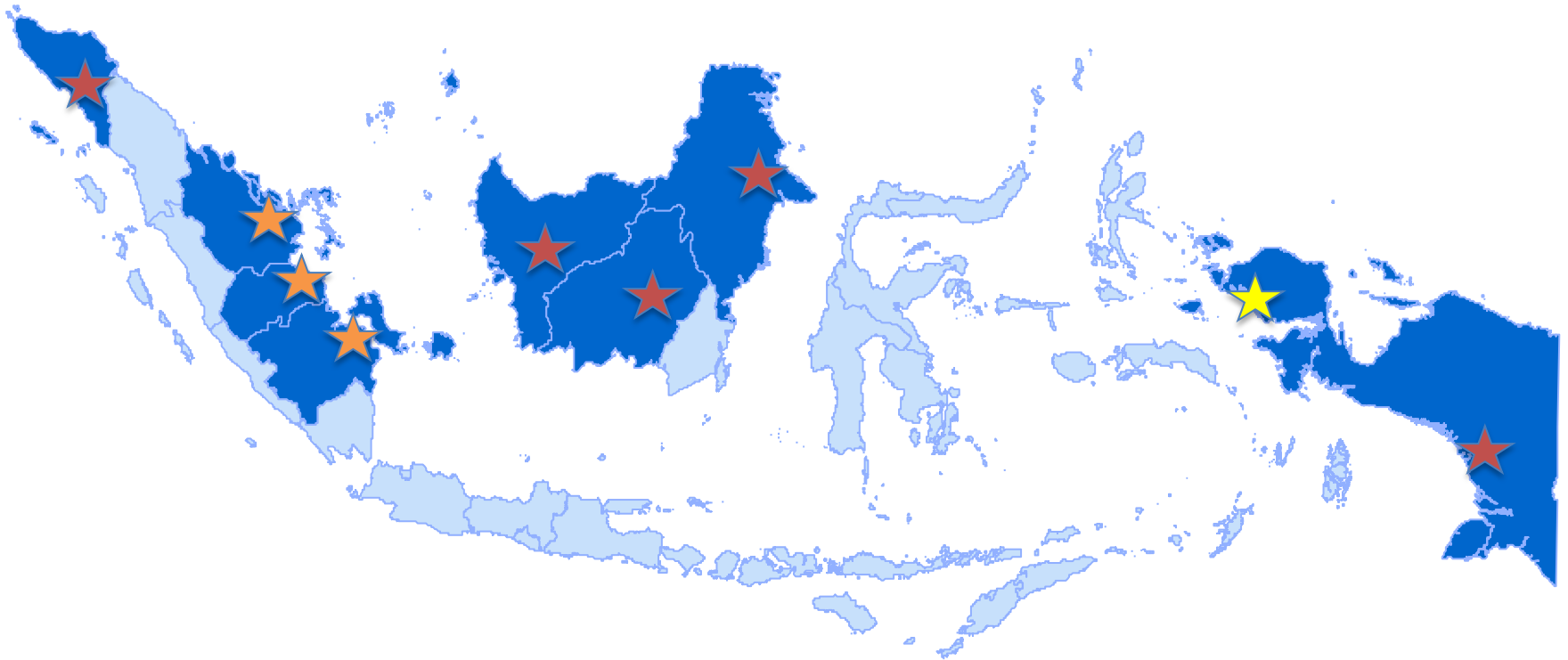


www.gcftaskforce.org

BRAZIL Acre, Amapá, Amazonas, Mato Grosso, Pará
INDONESIA Aceh, Central Kalimantan, East Kalimantan, Papua, West Kalimantan
MEXICO Campeche, Chiapas | NIGERIA Cross River State | USA California, Illinois



GCF Provinces and LOI-NoRI REDD+ Preparedness and Learning Provinces



www.gcftaskforce.org

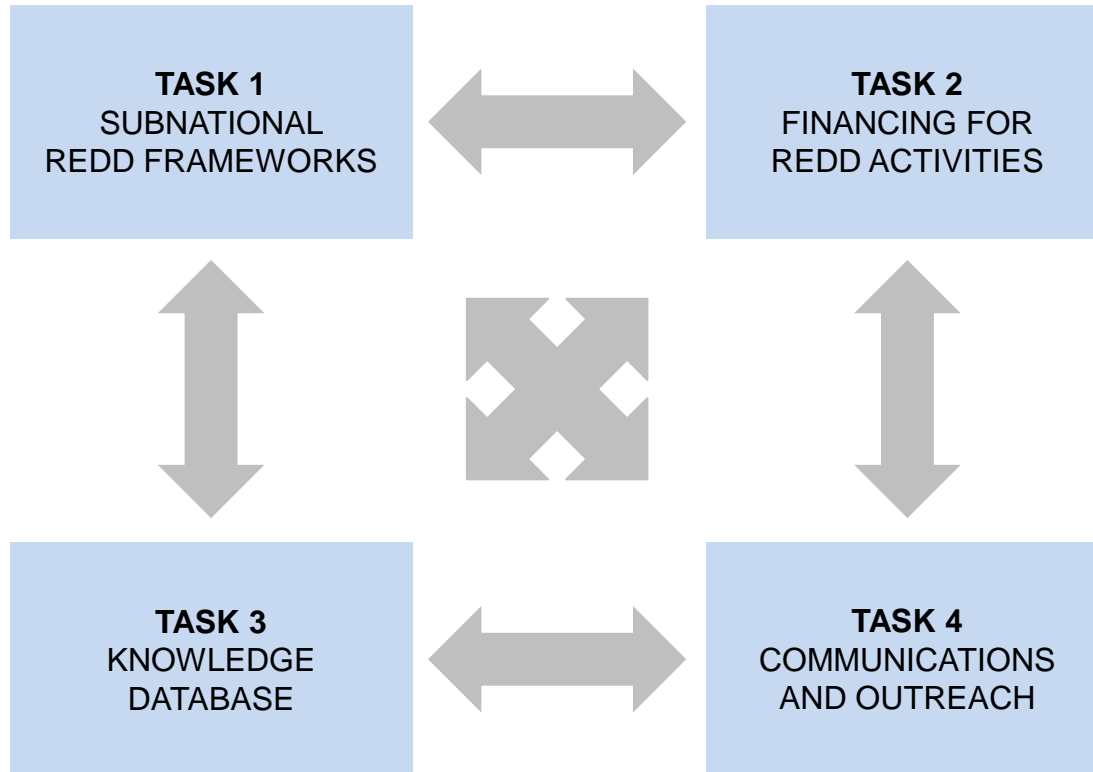
BRAZIL Acre, Amapá, Amazonas, Mato Grosso, Pará

INDONESIA Aceh, Central Kalimantan, East Kalimantan, Papua, West Kalimantan

MEXICO Campeche, Chiapas | NIGERIA Cross River State | USA California, Illinois



Implementing GCF Activities (2010-2011)

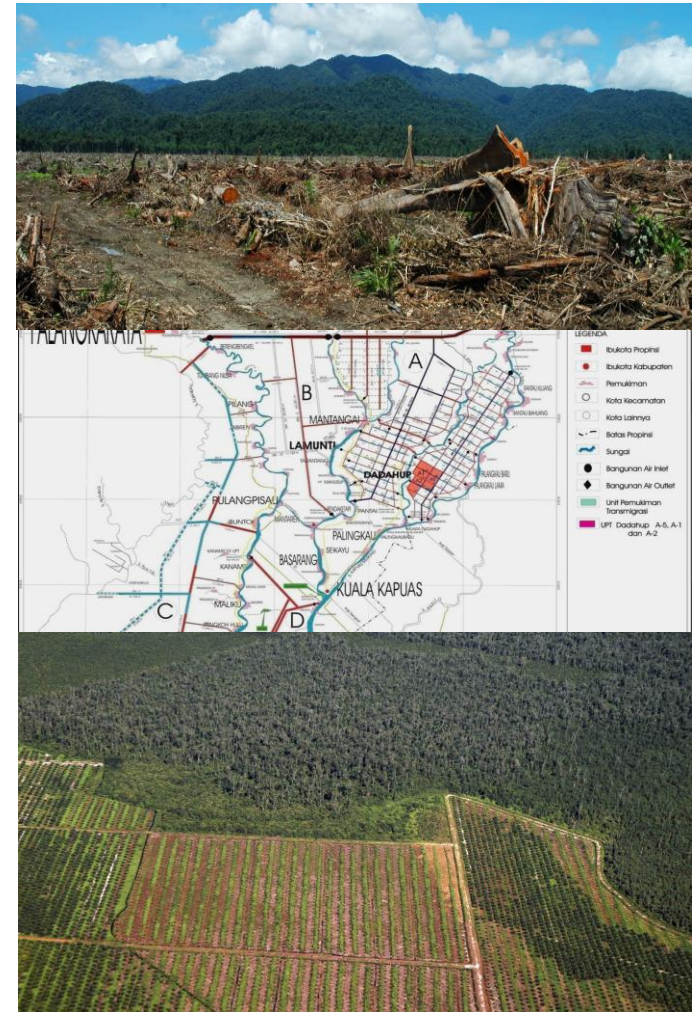




Working in Progress: Making Database Available

Province-based Database available:
Central Kalimantan, East Kalimantan, West Kalimantan, Papua and Aceh

- Drivers of Deforestation
- Governance
- Maps and Carbon Accounting
- Province Strategy on REDD
- FPIC and Community Engagement
- Social and Economy
- Alignment with National Policy Development





Taking Roles in National REDD+ Development

- July – December 2010
 - Development of REDD+ Pilot Provinces Selection Criteria through public consultation
 - Public consultation for REDD+ National Strategy
 - Proposal Submission for Pilot Province Selection: Central Kalimantan selected
- January – June 2011
 - Align with the REDD+ National Task Force on pilot province(s) development plans, national strategy, MRV, and stakeholders engagement

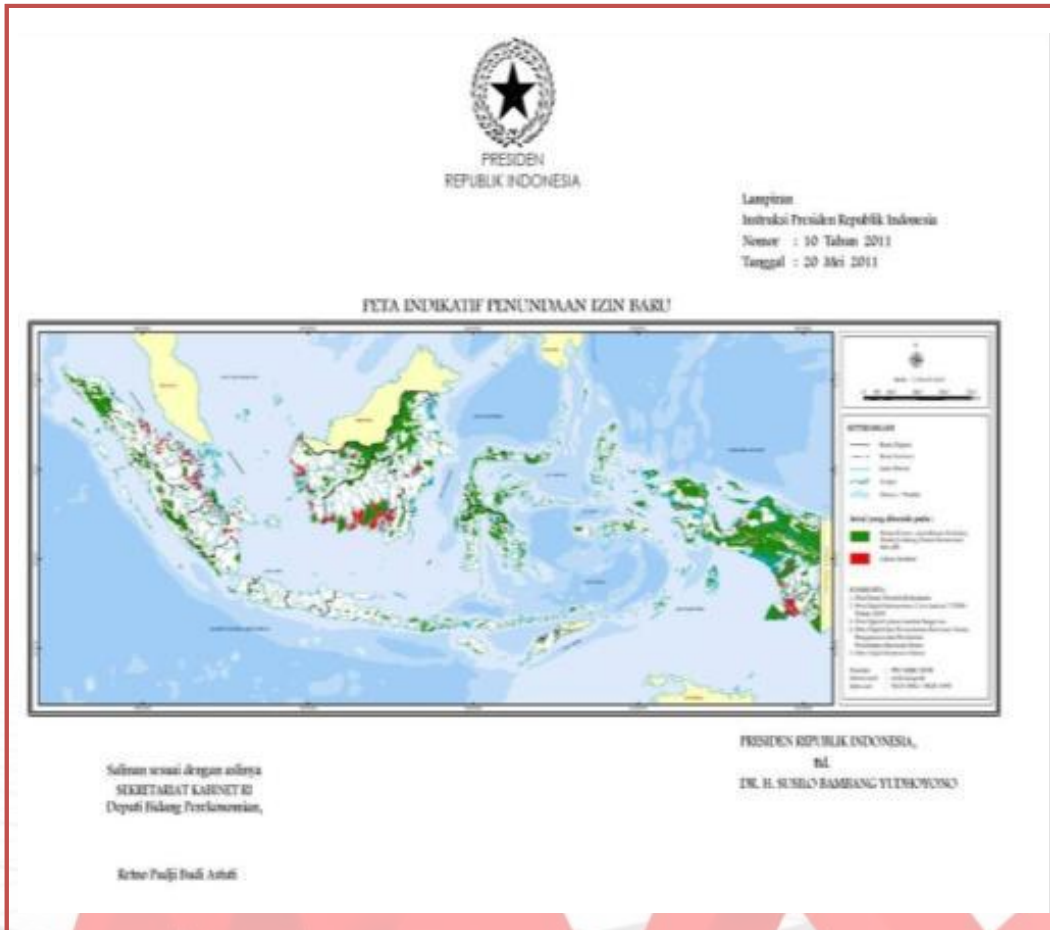
Further role in the New REDD+ National Task Force ?



Multi-faceted Communication

- Dialogue and technical discussions on REDD+ development among GCF members (2 technical meetings on Database, Financing Instruments and FPIC)
- Relating and showcasing province initiatives with national and global initiatives (National Task Force, Green Governors Summit, and UNFCCC-COP side event)
- Communicating process of learning on REDD+ development implementation (what communication strategy is most suitable? How GCF task Force can contribute and assist REDD+ development and province-national initiatives)

Inpres 10/2011 suspends issuance of new licenses and instructs governance improvement

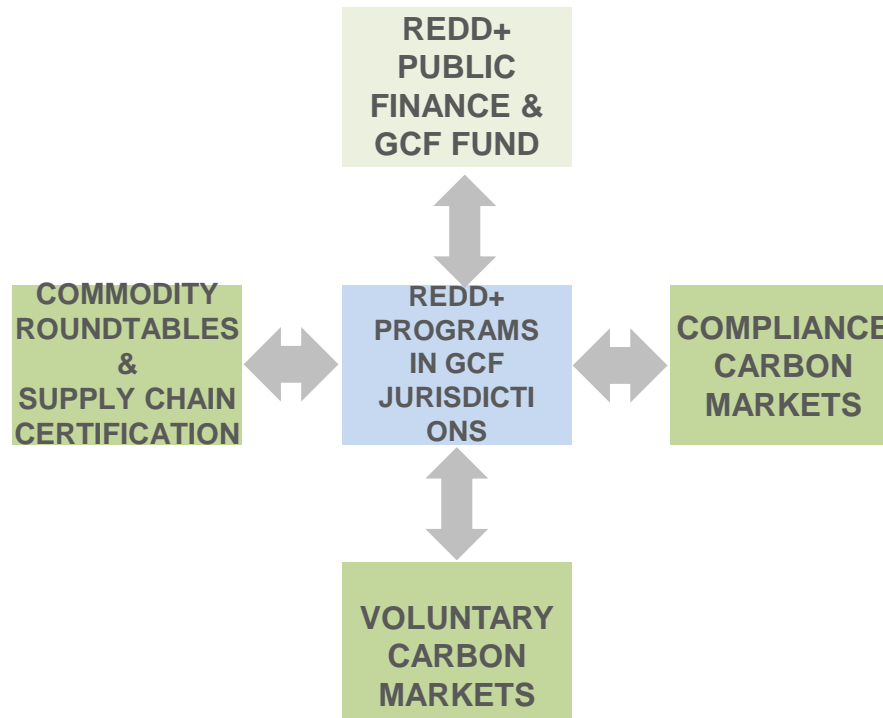


Urgent next steps:

- ✓ Development of “One Map” as basis of decision-making
- ✓ Accelerated enactment of Forest Estate guaranteeing recognition of *adat* customary rights



Opportunities to take role in REDD+ National Development: Preparedness and Implementation

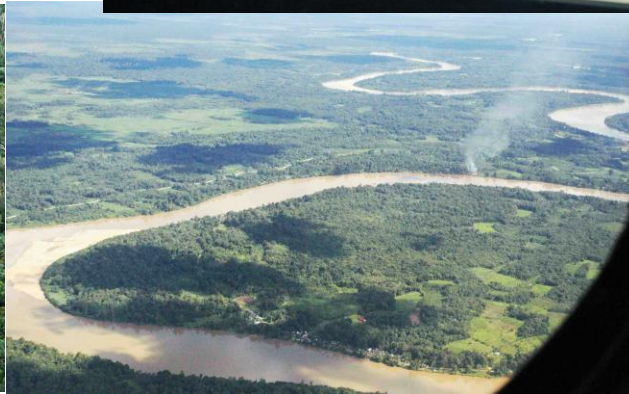




Subnational REDD+ Frameworks



- **CREDITING PATHWAYS**
- **STATE-LEVEL ACCOUNTING**
- **PROJECT NESTING ARCHITECTURES**
- **MONITORING, REPORTING & VERIFICATION (MRV)**
 - *State-level performance*
 - *Nested project performance*
- **REDD INFRASTRUCTURE**
 - *REDD Strategy*
 - *Legal frameworks*
 - *Registries*
- **SAFEGUARDS**
 - *Environmental*
 - *Free prior informed consent*
 - *Protection of rights/interests*
 - *Benefit sharing*
- **MULTI-STAKEHOLDER PROCESSES**
- **ENFORCEABILITY**
- **LINKAGE ARRANGEMENTS**



GCF
task force

www.gcftaskforce.org

BRAZIL Acre, Amapá, Amazonas, Mato Grosso, Pará

INDONESIA Aceh, Central Kalimantan, East Kalimantan, Papua, West Kalimantan

MEXICO Campeche, Chiapas | NIGERIA Cross River State | USA California, Illinois