

# NATIONAL REDD+ STRATEGY

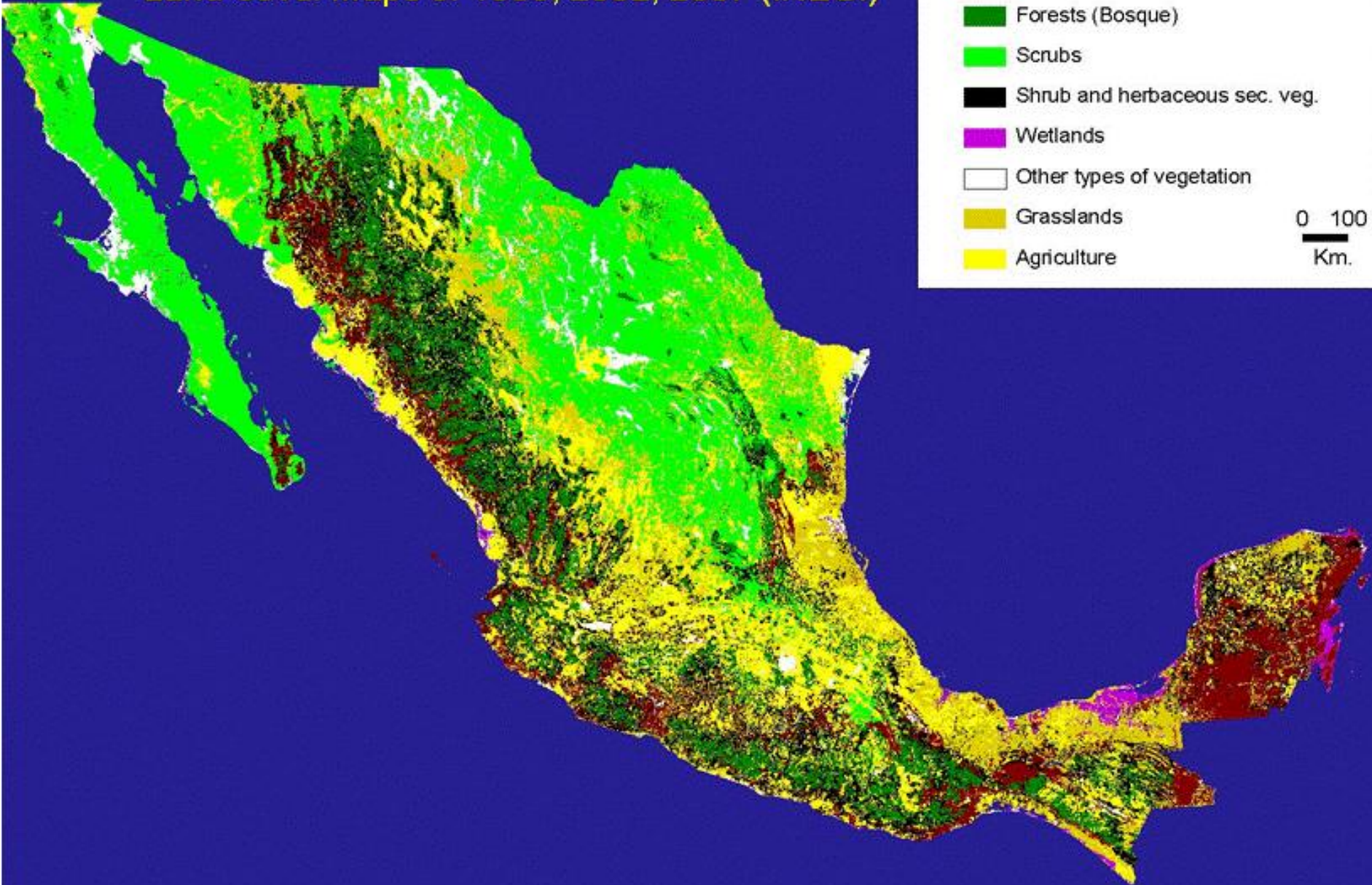
## MEXICO

GCF task force – Palangka Raya, September 2011

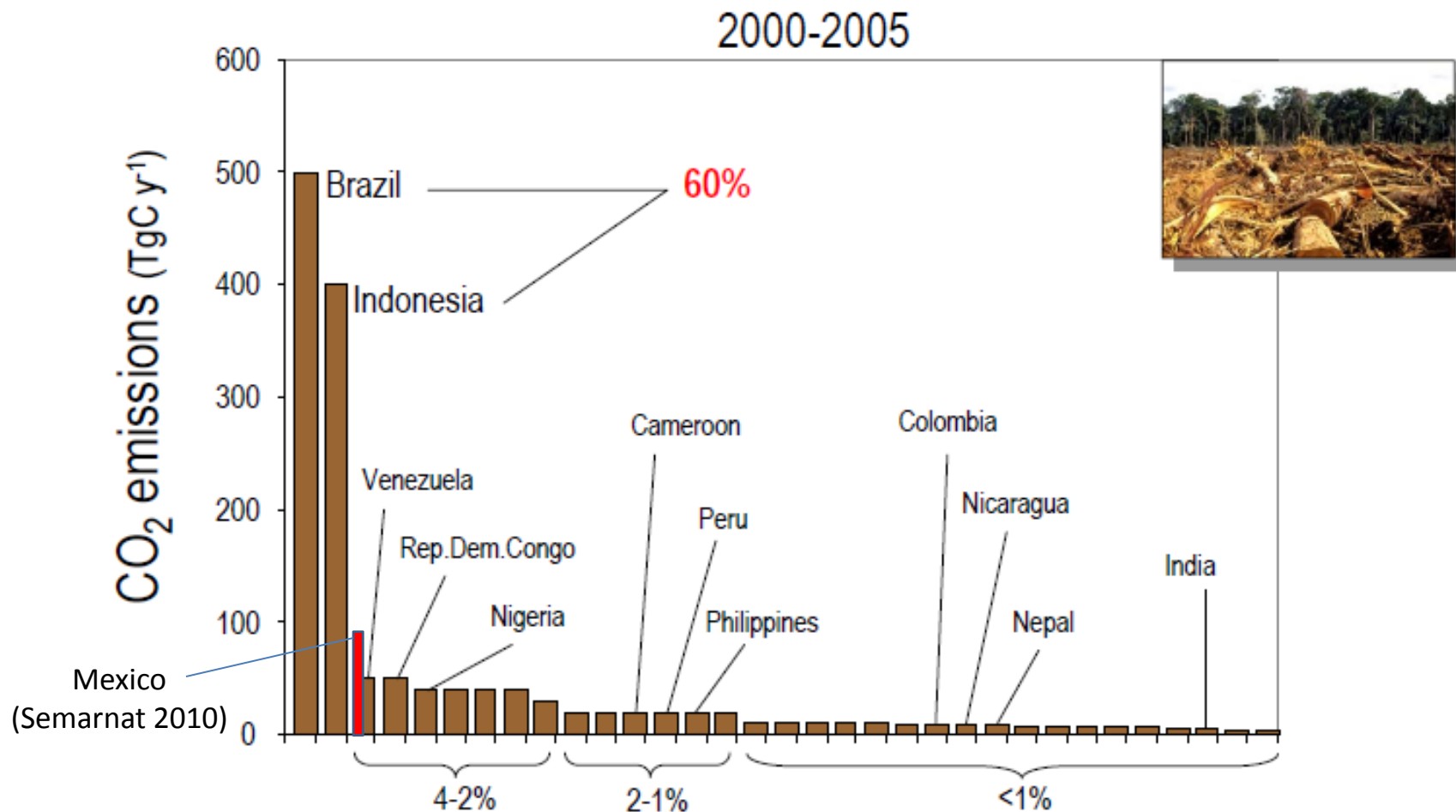
Jorge Mendoza, Ben de Jong, Victor Ku,  
El Colegio de la Frontera Sur

# Land-cover maps of 1993, 2002, 2007 (INEGI)

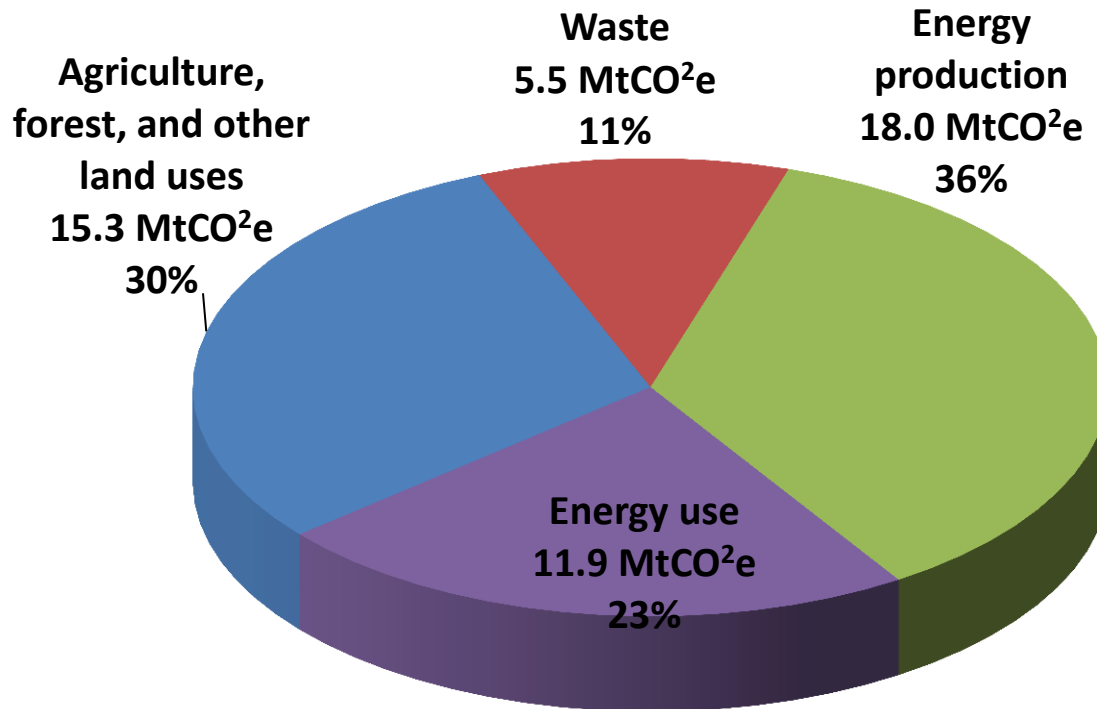
- Forests (Selva)
  - Forests (Bosque)
  - Scrubs
  - Shrub and herbaceous sec. veg.
  - Wetlands
  - Other types of vegetation
  - Grasslands
  - Agriculture
- 0 100  
Km.



# Net CO<sub>2</sub> Emissions from LUC in Tropical Countries



# The Forestry sector is an Environmental Climate Change Programme issue



**REDD + actions are included as one of the goals, but needs additional fundings.  
The first step is developing of the National REDD + Strategy**

# Forest and scrublands in Mexico (Hectares), 1993, 2002 and 2007

	1993	Loss 1993-2002 (ha annually)	2002	Loss 2002-2007 (ha annually)	2007
Conifers	8,101,347	-29,498	7,835,867	928	7,840,507
Conifers and temperate broadleaf	13,331,923	-35,190	13,015,211	-8,889	12,970,766
Temperate broadleaf	13,308,954	-42,920	12,922,674	-1,167	12,916,839
Tropical evergreen and tropical sub-deciduous	15,591,325	-111,170	14,590,797	-84,782	14,166,886
Tropical deciduous	17,913,438	-131,373	16,731,083	-70,153	16,380,316
Other forest associations	982,317	-3,885	947,355	8,912	991,914
Forest Subtotal	69,229,304	-354,035	66,042,987	-155,152	65,267,228
Semiarid scrubland zones	21,214,983	-57,451	20,697,928	-33,852	20,528,670
Arid scrubland zones	37,189,951	-44,245	36,791,749	-49,757	36,542,963
Other areas	17,587,258	-44,173	17,189,701	-91,947	16,729,965
Scrubland Subtotal	75,992,192	-145,868	74,679,378	-175,556	73,801,598
<b>TOTAL</b>	<b>145,221,496</b>	<b>-499,903</b>	<b>140,722,365</b>	<b>-330,708</b>	<b>139,068,826</b>

Source: Prepared with data of INEGI, Land Use and Vegetation Maps, Series II, III and IV (1993, 2002 and 2007).

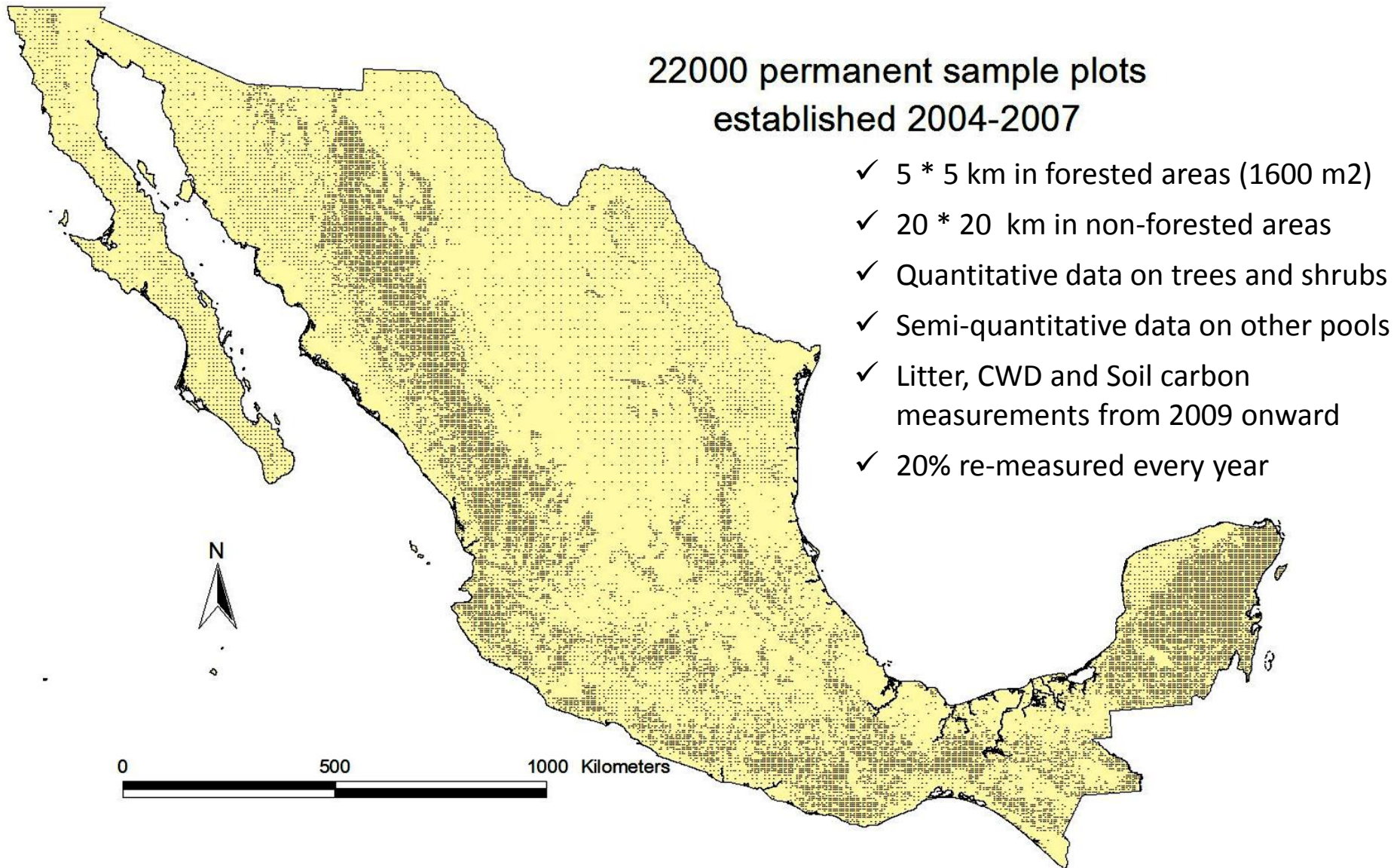
# Deforestation in Mexico (hectares) 2002-2007

Forest formation	Primary		Secondary	
	2002	2007	2002	2007
Conifers	5,547,621	5,537,623	2,288,247	2,302,883
Conifers and temperate broadleaf	8,987,660	8,906,451	4,027,552	4,064,314
Temperate broadleaf	7,897,002	7,858,030	5,025,671	5,058,809
Tropical evergreen and tropical sub-deciduous	3,590,829	3,584,406	10,999,967	10,582,480
Tropical deciduous	7,745,460	7,631,998	8,985,623	8,748,318
Other forest associations	894,923	925,441	52,432	66,473
Forest Subtotal	34,663,495	34,443,949	31,379,492	30,823,277
Change in forests	-219,546		-556,215	
Semiarid scrubland zones	18,221,515	18,103,812	2,476,414	2,424,857
Arid scrubland zones	34,056,814	33,805,316	2,734,935	2,737,647
Other areas	12,863,326	12,585,468	4,326,375	4,144,497
Scrubland Subtotal	65,141,655	64,494,596	9,537,724	9,307,001
Change in scrublands	-647,059		-230,723	
Total change	-821,605		-786,938	

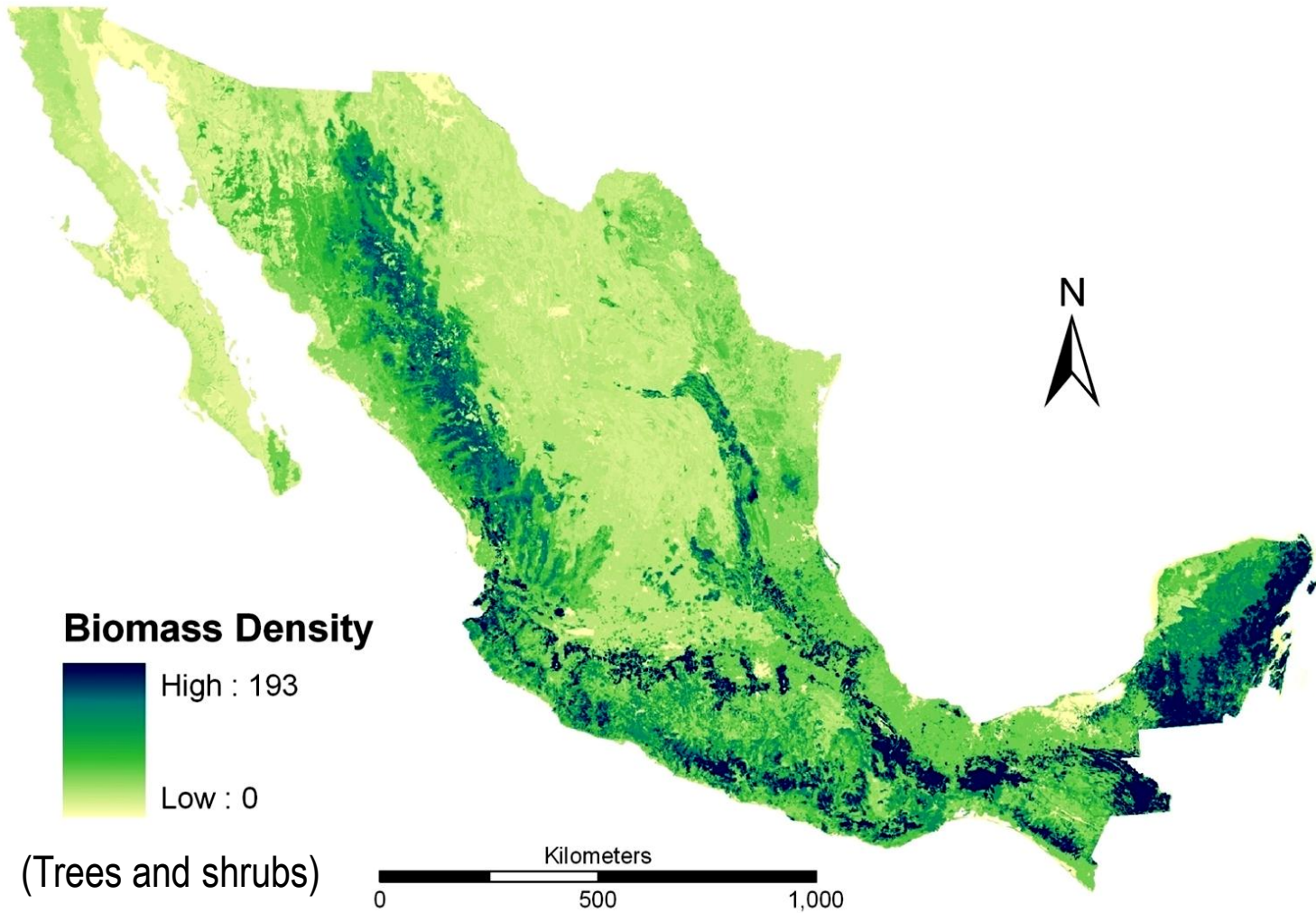
Source: Prepared with data of INEGI, Land Use and Vegetation Maps, Series III and IV (2002 and 2007).

## 2. Develop biomass density maps to estimate level of emissions from LU-change.

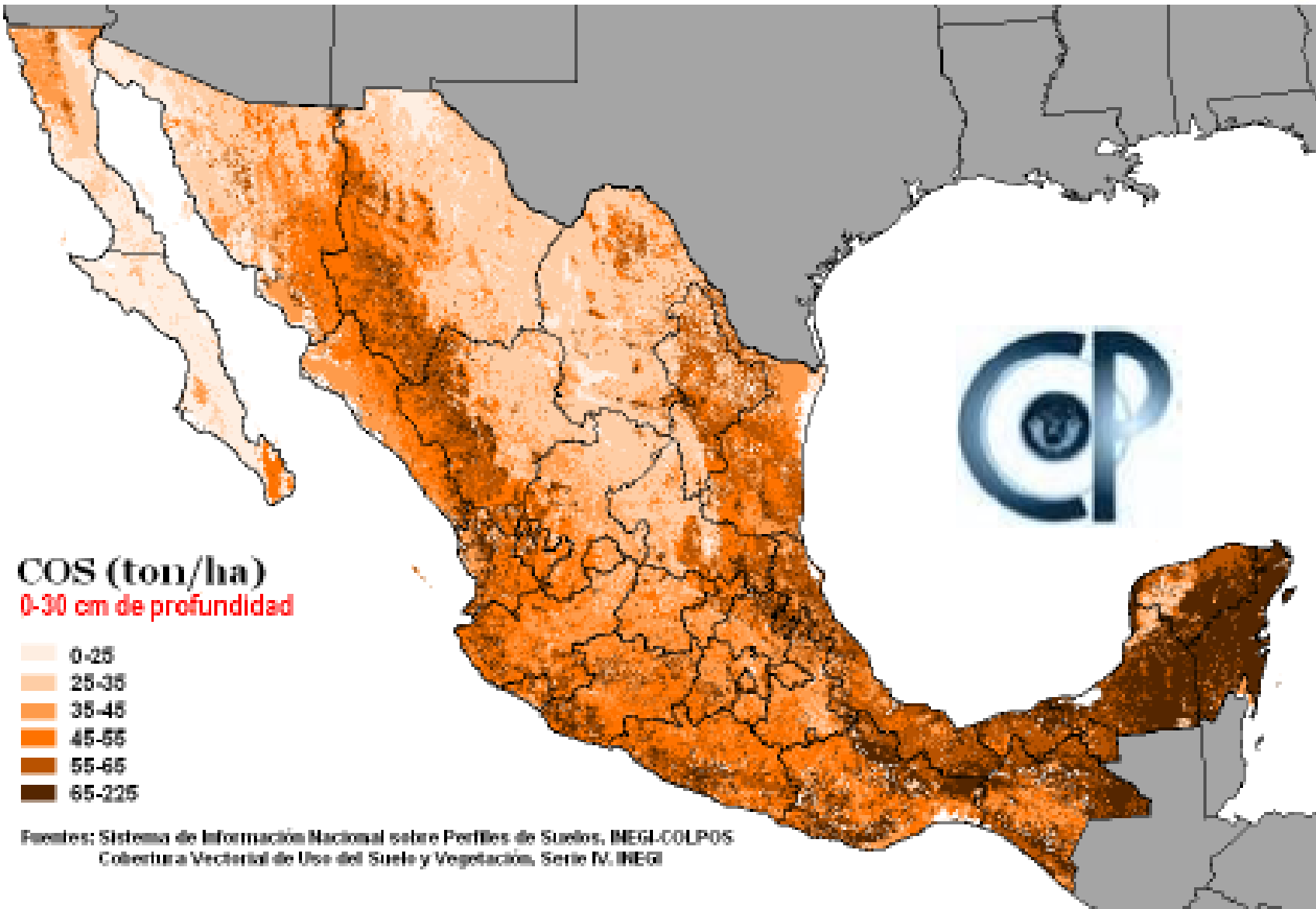
### a. National inventory data and national database of biomass equations



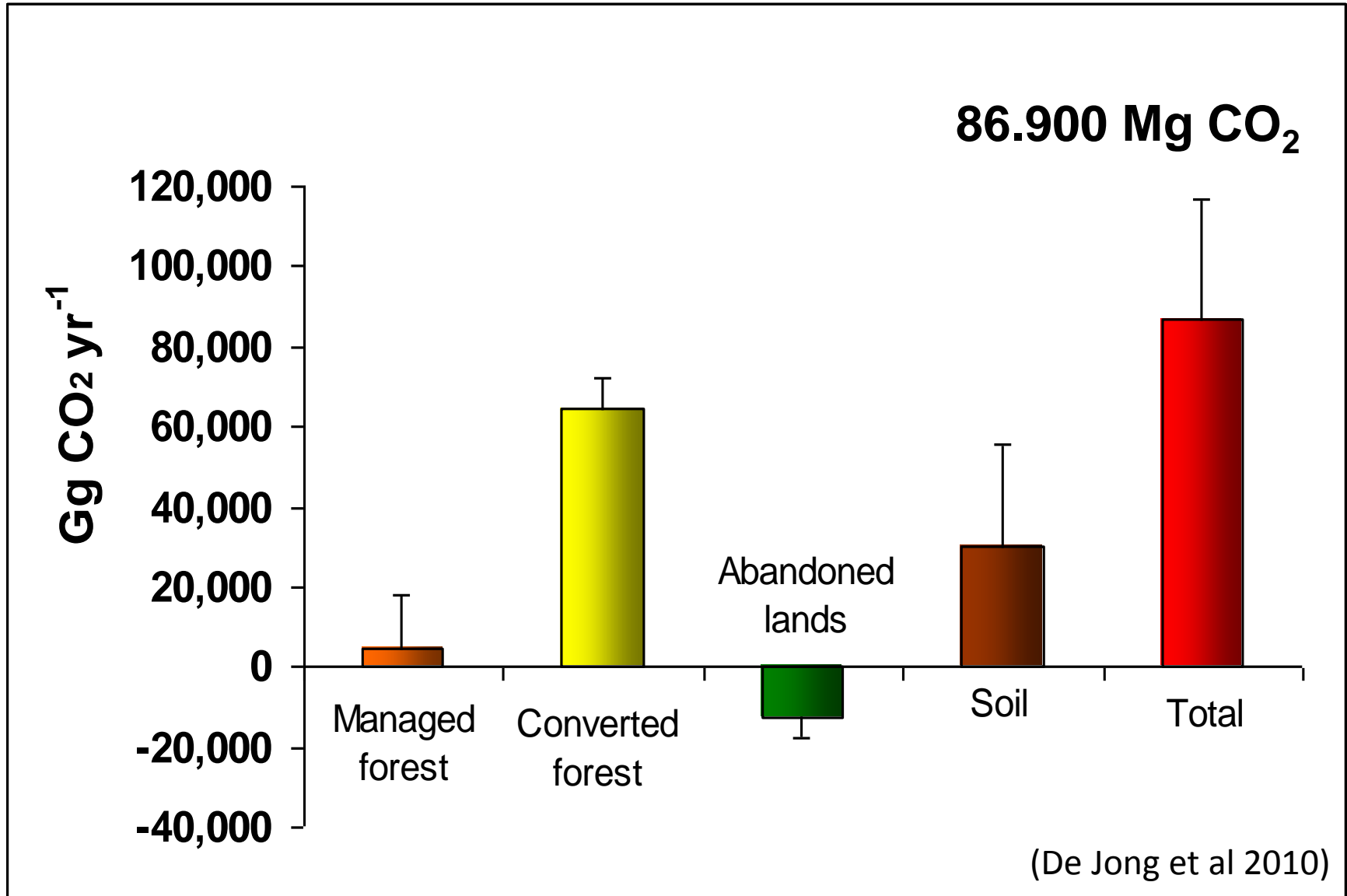
## c. Assign biomass density to each forest polygon of the LU maps



# Soil Organic Carbon

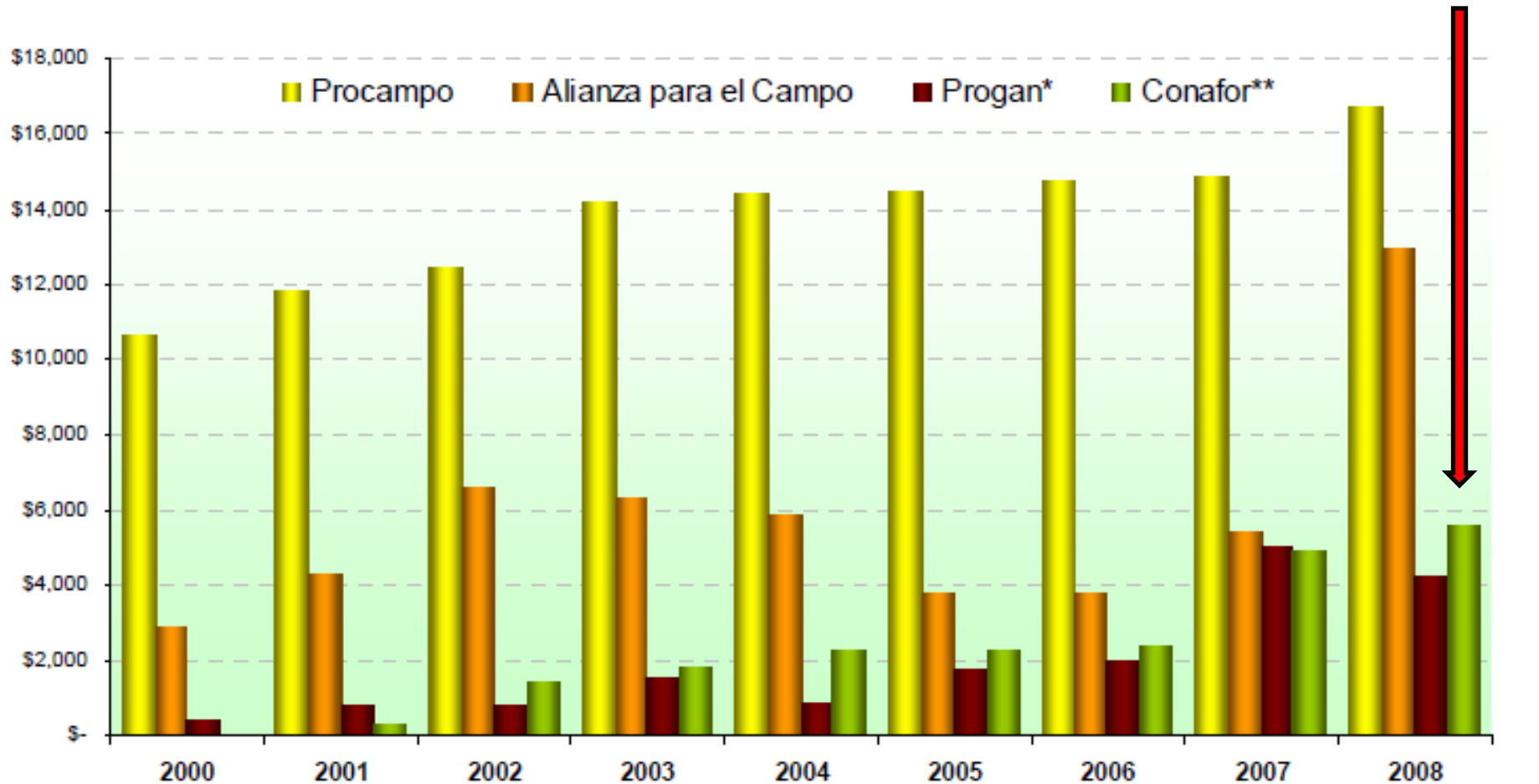


### 3. Annual CO<sub>2</sub> fluxes from the LULUCF sector, to be used as Historical Business As Usual scenario

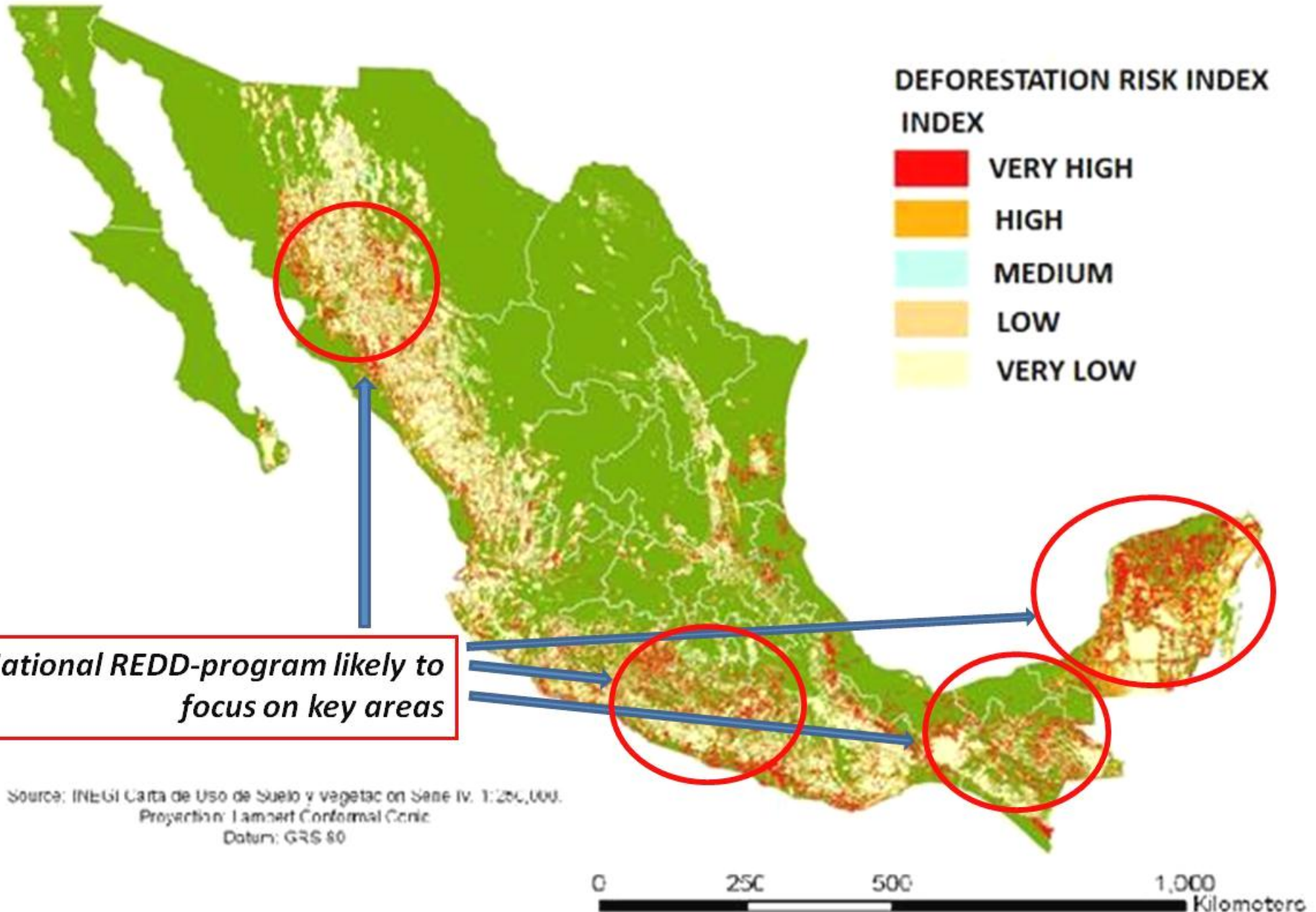


## 4. Analyse impact of recent governmental programs on LU and LU-change, to adjust BAU scenario

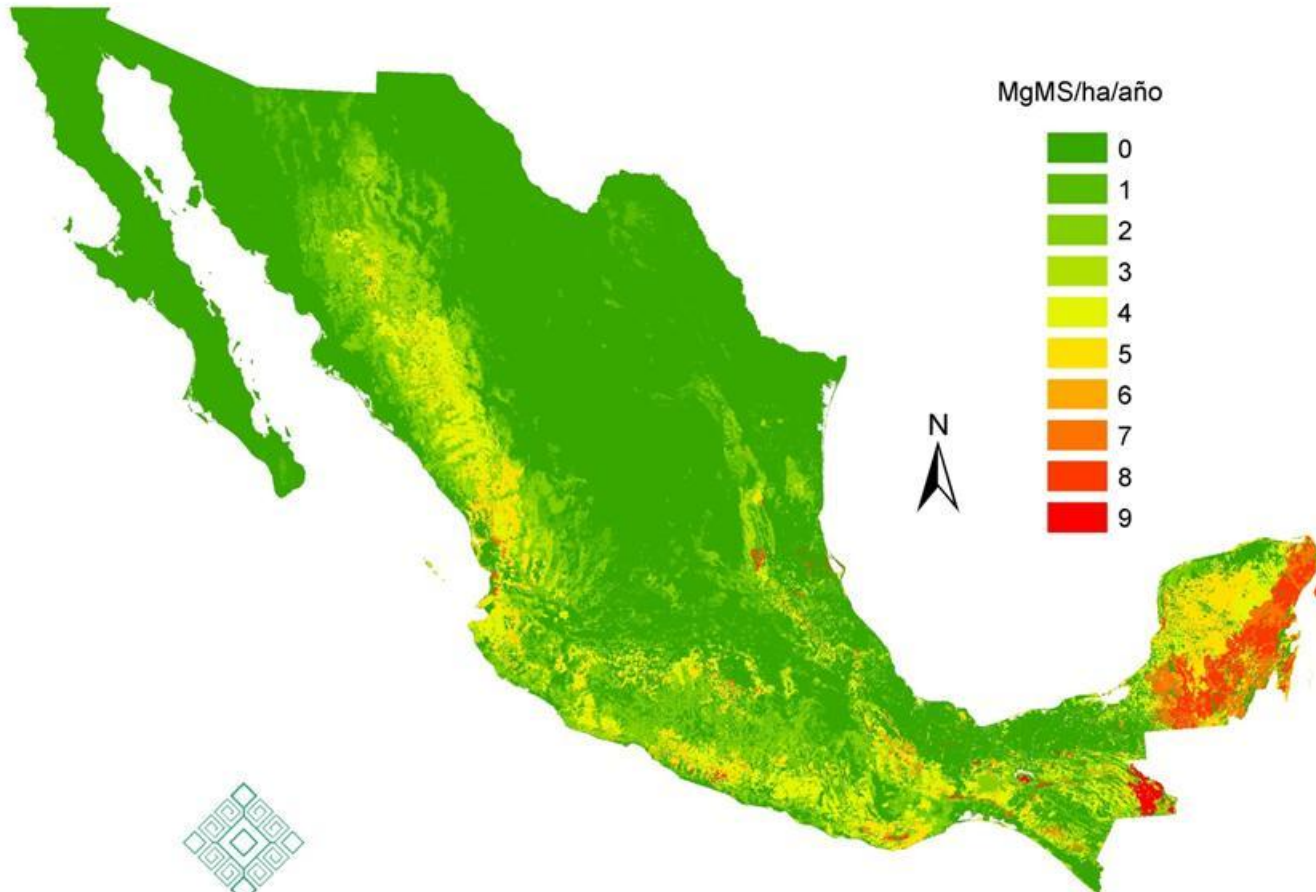
Principal programs of agrarian policies and forestry  
(in millions of pesos)



## 5. Identify forest areas that are under high risk due to drivers



# Biomass Increase in forests (Mg DM/Ha/Yr)



# Mexico National REDD+ Strategy Design Process

National  
Development Plan  
2006-2012

National Climate  
Change Strategy  
(2007)

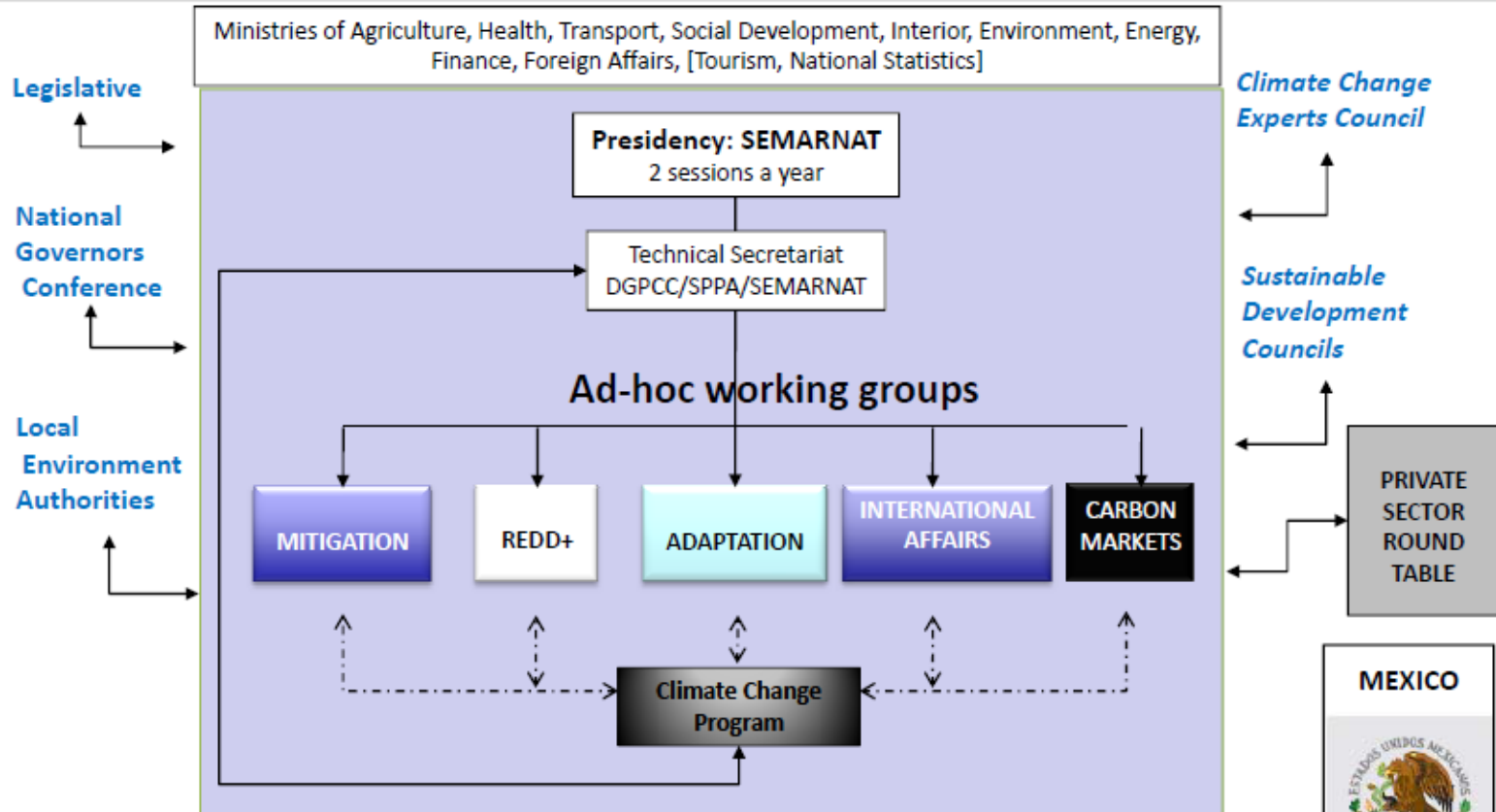
Special Climate  
Change Program  
(2009-2012)

Mexico's Vision  
for REDD+  
(2010)

National REDD+  
Strategy  
(2011-2012)

# National Ministerial Commission for Climate Change, CICC

## 10 Ministries and 2 permanent invitees



GT-MITIG: Working group for mitigation policies  
 GT-REDD: REDD Working group  
 GT-ADAPT: Working group for adaptation policies  
 GT-PECC: PECC working group

GT-INT: International policy working group  
 COMEGEI: Mexican committee for GHG emissions abatement projects  
 MT PRIV: Working group with the industrial private sector

# CTC REDD+ MEXICO

- 2009 the CTC was created;
  - 70 Social organizations
  - To analyze and generate recommendations for REDD
  - To promote the management and design of the national strategy of REDD+

# REDD + Framework Basics

**How to stop and reverse the loss of forest and its carbon ... ?**

**Without sacrifice other objectives and principles, both social & environmental ?**

**How to measure the impacts of this actions?**

**How to finance them?**

**Identify driving causes of Deforestation and Degradation (DD) and incentives for REDD +**

**Safeguards**

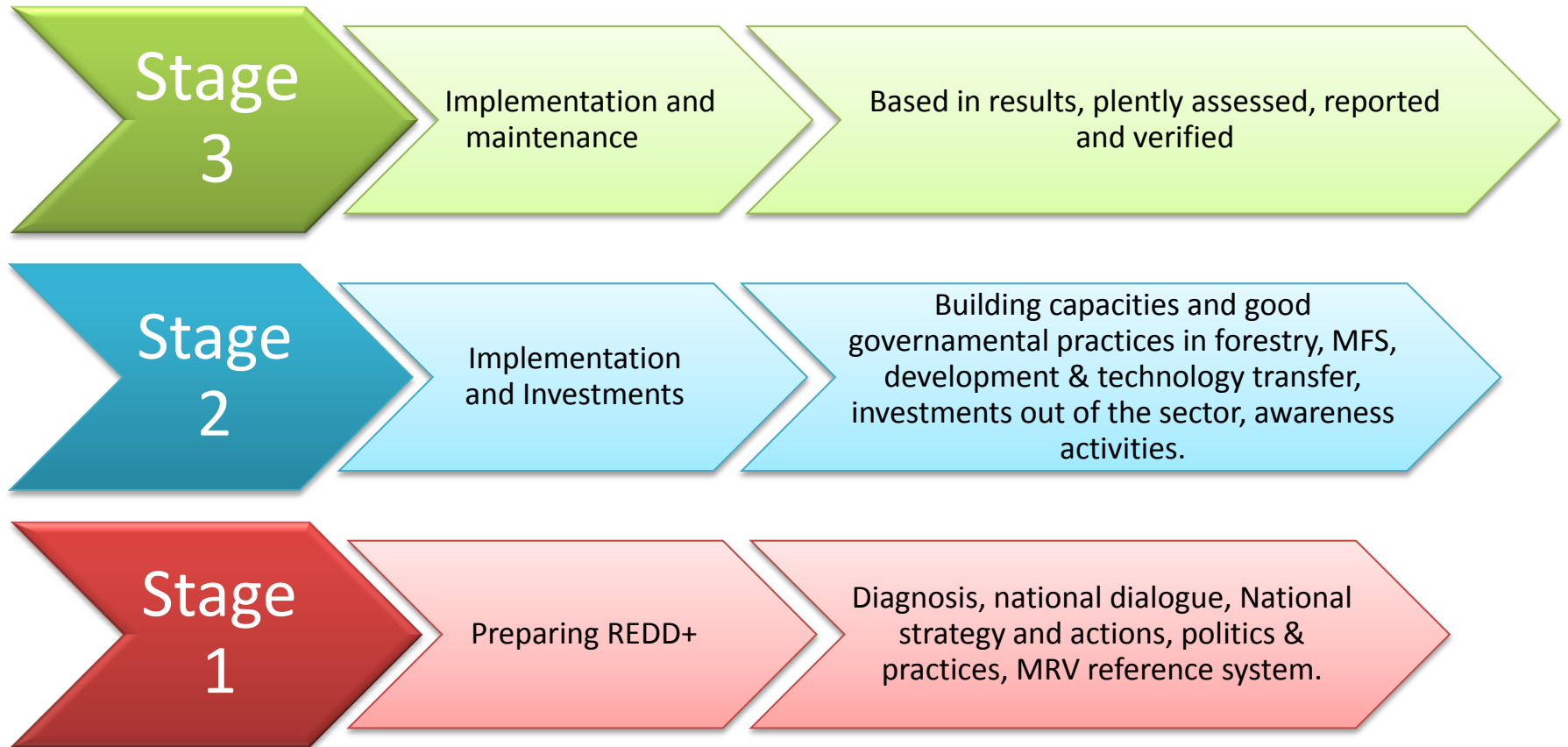
**Reference emissions levels**

**Short – term & Long – term Financing**

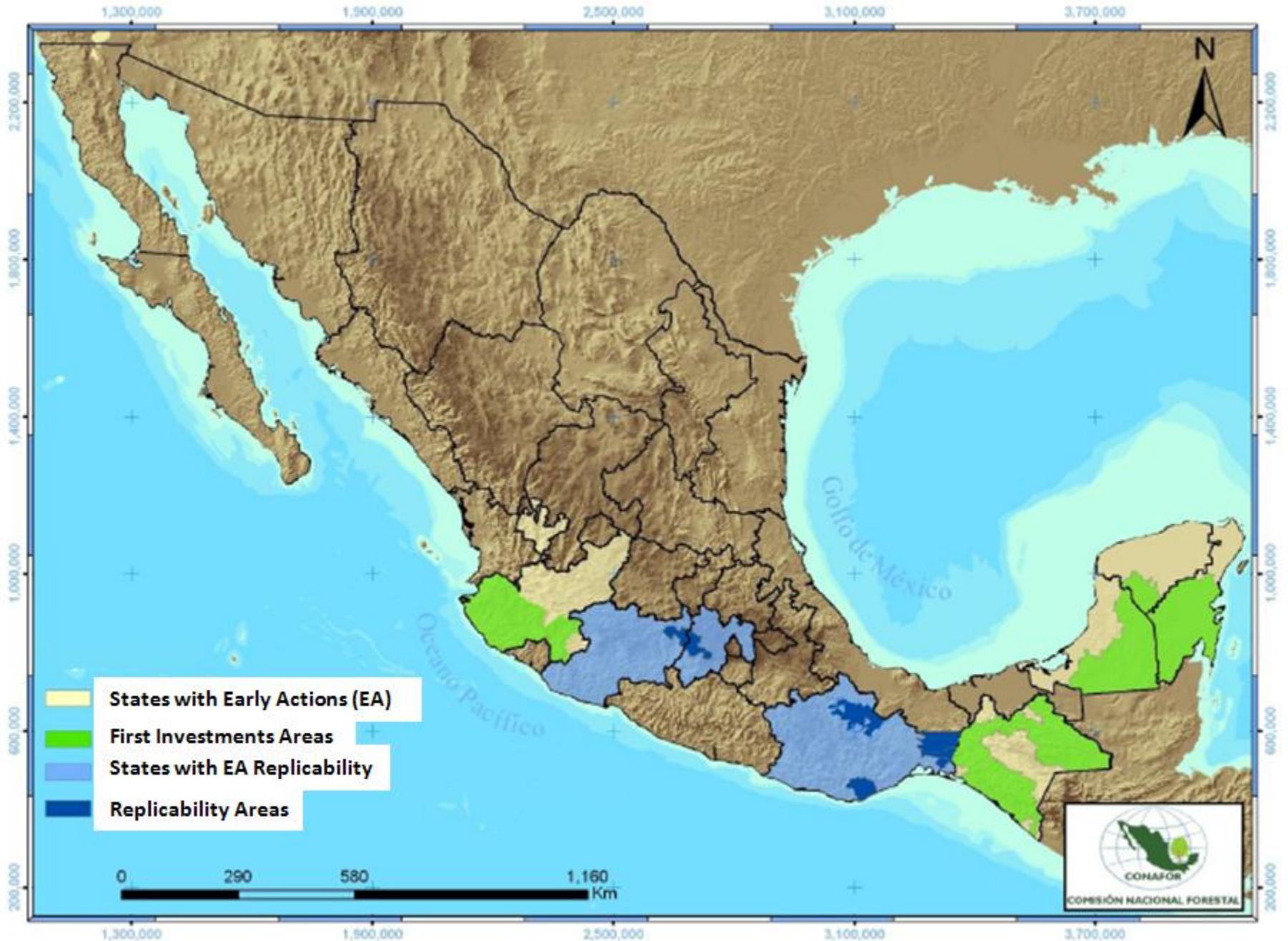
**Institutional and Public Policies**

**Monitoring, Reporting and Verification**

# REDD + Implementation



# Early action Areas in Mexico



- Thank you