

Secretaria de
Estado de
Meio Ambiente

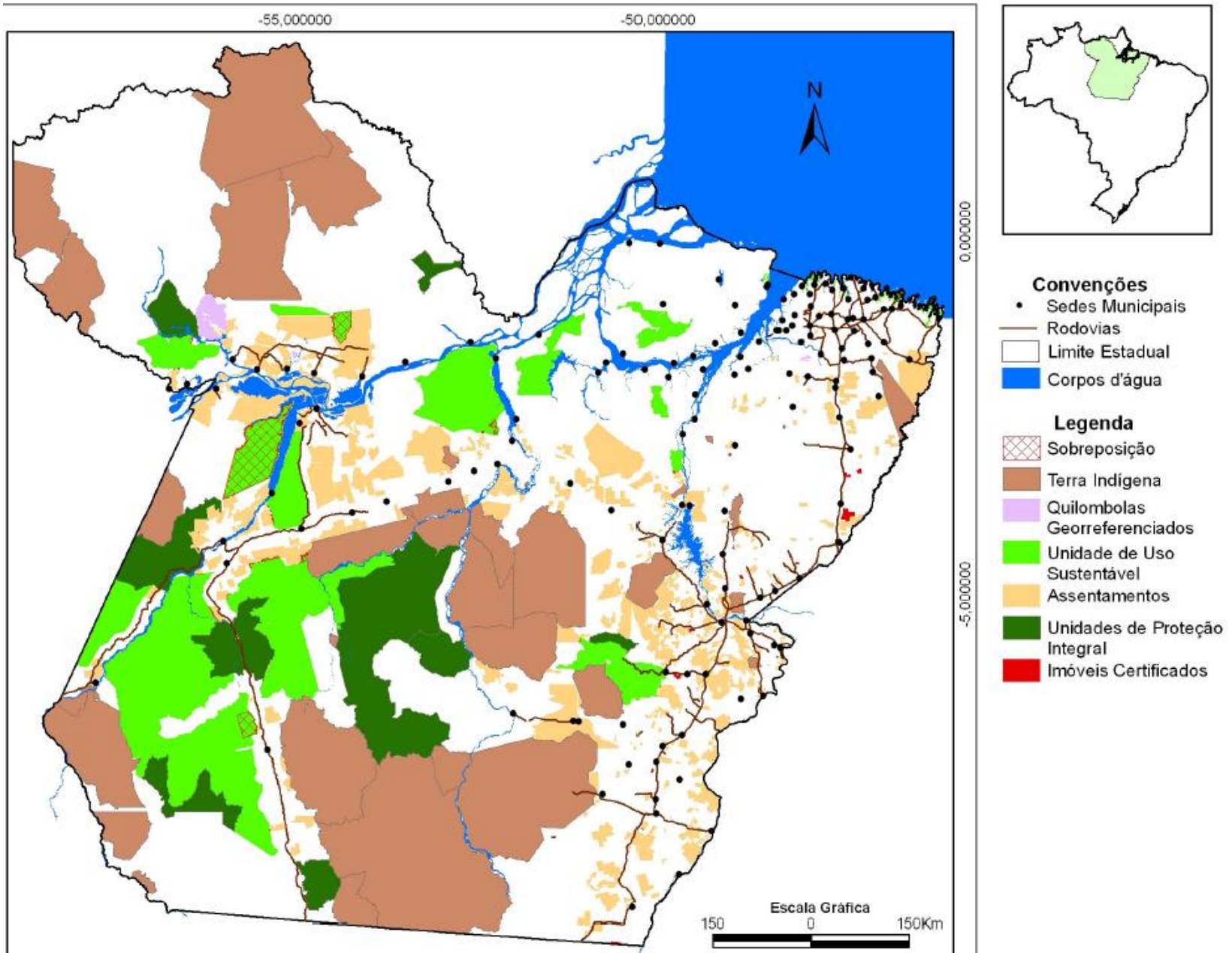


GOVERNO DO
PARÁ

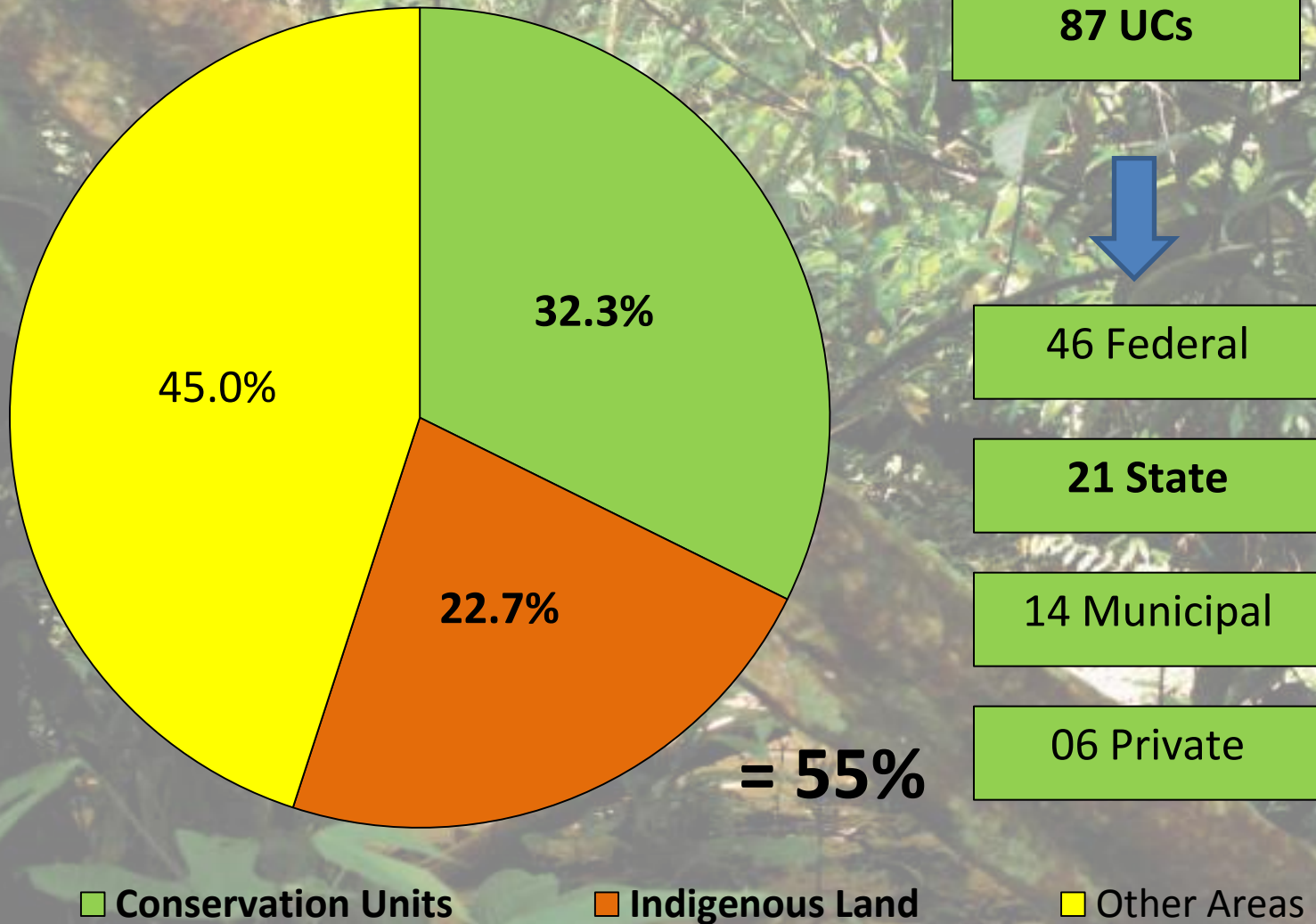
The State of Pará

September/2011

State Protected Areas



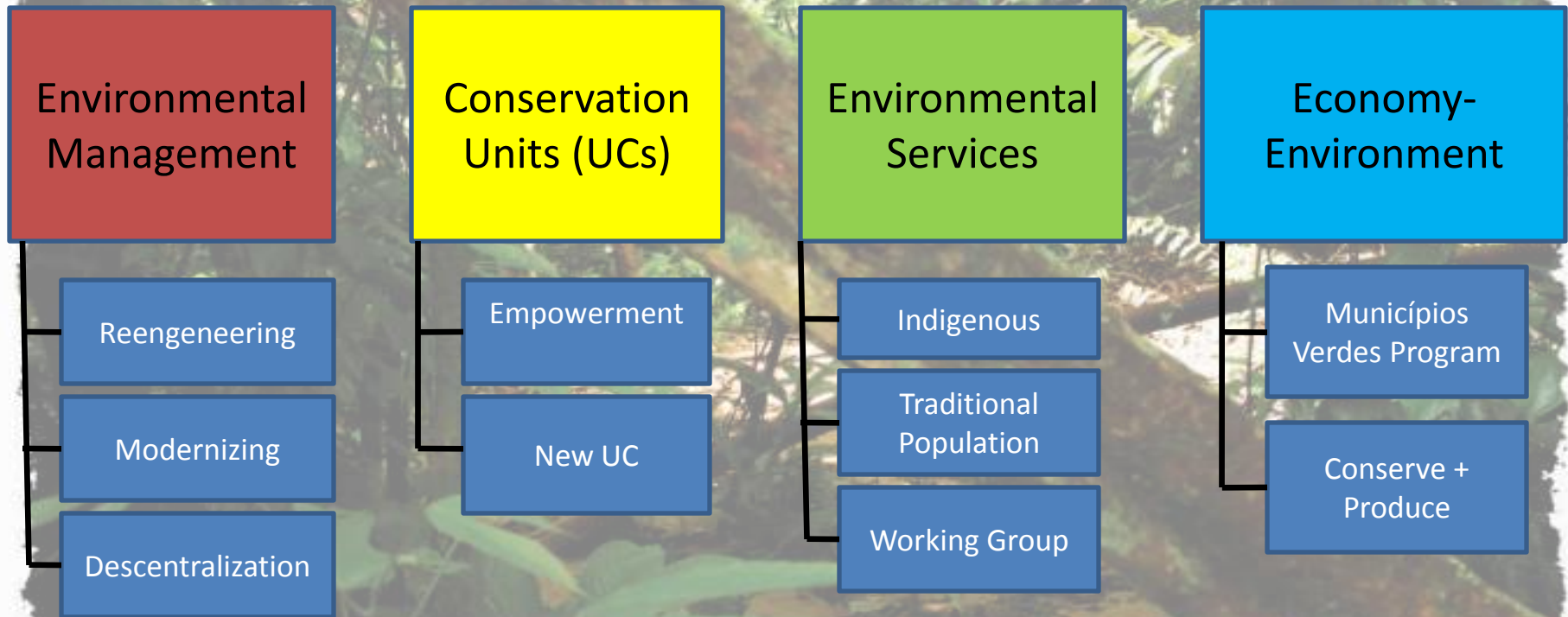
State Protected Areas



Source: *Áreas Protegidas na Amazônia Brasileira - avanços e desafios* (IMAZON, 2010)

What have we been doing

State Plan for Prevention, Control and Alternatives to Deforestation – PPCAD



Municípios Verdes Program

A State Pact to Assure Economical Sustainable Development

State Government

Local
Governments

Civil Society

NGOs

Governance

- Objective: Sustainable Foment State Economy
- Effective policy to reduce deforestation based on a concept that there is **no quality of life without environmental equilibrium**
- Generates bases for **local government environmental management**
- Adds values to productive activities = market differential

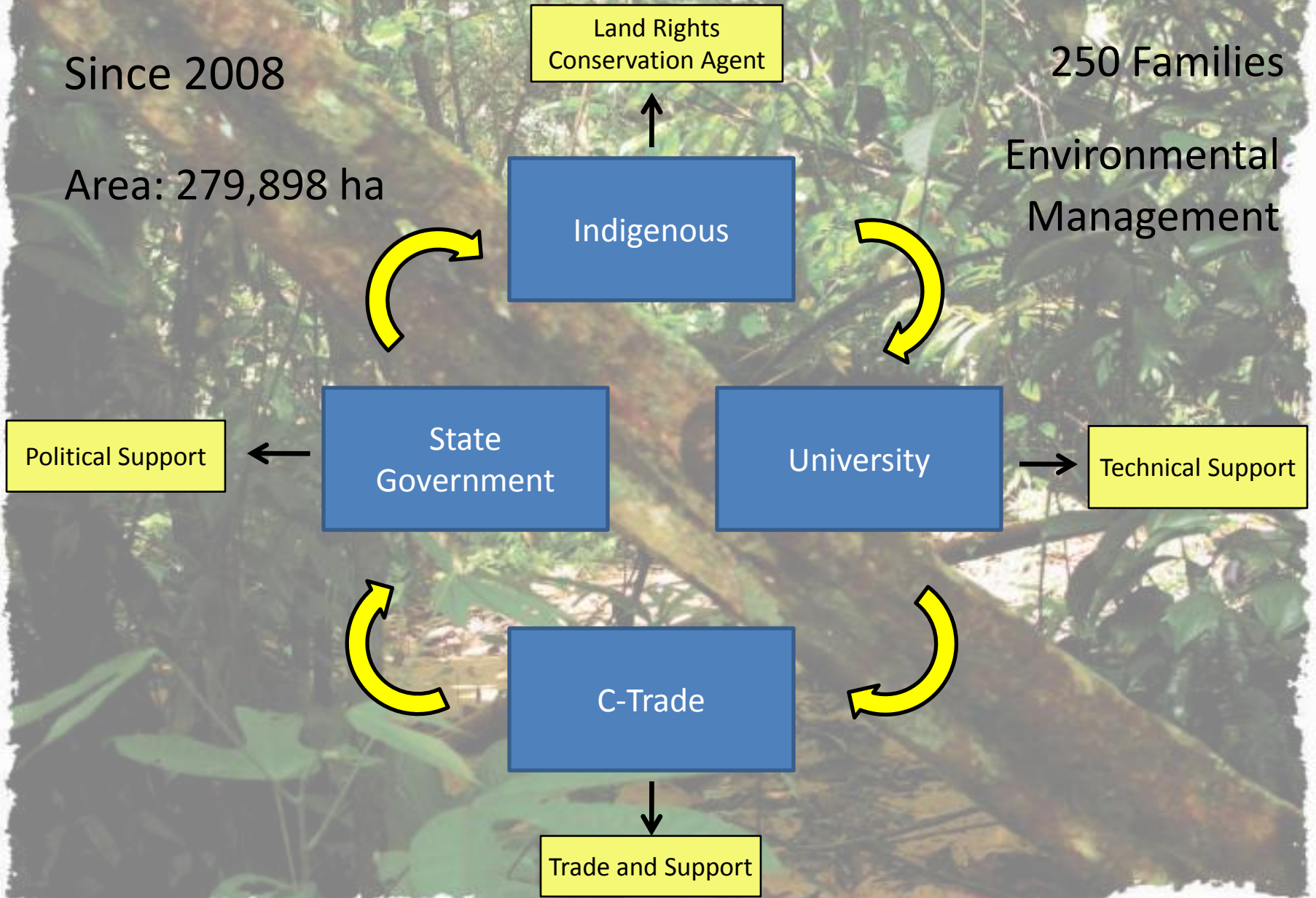
Tenetehara Program

Since 2008

Area: 279,898 ha

250 Families

Environmental
Management



Pará's Goals

- Pará as an active partner of the Federal Government in the Brazilian commitment for GHG emission reductions.
- Build a new political concept able to embrace all kinds of environmental and social challenges.
- Establish a new development concept based on the principle of Preserve = Produce and Produce = Preserve.

Secretaria de
Estado de
Meio Ambiente



Terima kasih!

+55 91 3184-3318

+55 91 3184-3319

gabinete@sema.pa.gov.br